

**national  
collaborative  
for infants  
& toddlers**



# NCIT

**FIVE-STATE  
POWER SHARING  
CONVENING**

**FOLLOW-UP PACKET**

**national  
collaborative  
for infants  
& toddlers**



**Become a Member Today!**



The National Collaborative for Infants & Toddlers (NCIT) is proud to bring such a dynamic group together. In Little Rock our focus will be on leaning in to learn and support the advocates on the ground as they lead in making the changes needed to ensure the health and wellness of all families in their states. Convenings, like this event, are only one-way the NCIT supports the movement - **Join as a member** and gain access to all NCIT has to offer.

When you become a member of the NCIT you align your organization with the hundreds of other members working on prenatal-to-three issues at the local, state, federal and tribal levels. You get no-cost access to an online grassroots action center, advocacy and issue trainings, tools and resources, as well as campaign consultation and one-on-one technical assistance from planning through every phase of a campaign. **All at no-cost! Free!**

Take the easy step and fill out the NCIT Membership Form today and join the growing, publicly available list of organizations with a shared commitment to infants and toddlers that is NCIT.

The NCIT is here to support you and your organization in taking action to help all babies and toddlers thrive. All we are missing is you! Learn more and become a member organization today!



## NCIT Five State Power Sharing Initiative

### Objective:

Every child deserves a strong start in life and the foundation we provide shapes their future and the future of our communities. The National Collaborative for Infants & Toddlers (NCIT) Five State Power Sharing Initiative seeks to advance effective prenatal-to-three (PN-3) policy advocacy by enhancing collaboration between state and local advocates and national partners. This initiative focuses on improving the conditions for effective policy advocacy in Alabama, Arkansas, Florida, Mississippi, and Texas—states that represent just under 20% of all children in the US under the age of three.

### Challenge:

Advancing crucial PN-3 policies, such as paid family and medical leave, access to health care, affordable child care, and healthy nutrition, is always challenging. However, passing policy in these five states is especially difficult due to systemic barriers that thwart even the savviest advocates. Consequently, these states experience disparities in health and well-being and unequal opportunities for infants and toddlers to thrive. Despite the urgency, support from nationwide advocacy movements often falls short. We want to change that.

### Solution:

The Five State Power Sharing Initiative

**Join us as we work collaboratively to improve the well-being of infants, toddlers and caregivers through policy advocacy in these five states.**



### Aims to:

- **Leverage Local Expertise:** Harness the knowledge and insights of state and local advocates who understand their communities' unique needs and political realities.
- **Enhance National Support:** Mobilize national organizations with resources and expertise to effectively support state and local efforts.
- **Facilitate Coordination:** Streamline communication and collaboration between local advocates and national partners to reduce redundancies and better meet advocates where they are in their campaigns.
- **Cultivate bipartisan political champions in all five states:** Tap into shared values and priorities among federal, state, and local decision-makers and advocates to actively pursue bipartisan support and leadership for the PN-3 population.

## Activities include:

- **Peer Leadership:** Create pathways for local and state advocates, decision-makers and national partners to communicate, share lessons learned and develop relevant strategies, tools, and convening opportunities.
- **Resource Alignment:** Ensure national organizations provide targeted support based on the specific needs identified by local and state advocates.
- **Policy Mapping:** Drive the development and implementation of impactful PN-3 policies in the five targeted states, addressing critical gaps and disparities.
- **Power-Sharing:** Participating organizations reimagine ways to share their power with PN-3 advocates in the five states.



## Impact Goals:

- **Policy Advancement:** Pass and implement PN-3 policies in Alabama, Arkansas, Florida, Mississippi, and Texas, improving the quality of life for nearly 20% of the nation's children under age three.
- **Reduced Disparities:** Address and mitigate significant health and well-being disparities young children and their families face in these states.
- **Strengthened Advocacy:** Empower local and state advocates with the support they need to achieve policy successes and drive meaningful change.
- **Increased investment:** Cultivate a more extensive and diversified base for long-term advocacy funding to support every phase of policy change and to build and sustain bipartisan political will for PN-3 policy advocacy.
- **Model Development:** Build an effective, scalable model that can be replicated in other states and regions.



## Take Action:

- **Community Organizations:** Join or strengthen your state-based coalition to contribute to local advocacy efforts.
- **National Organizations:** Become part of the Five State National Partner Table to provide critical resources and support.
- **Foundations and Funders:** Financially support NCIT's Power Sharing Initiative or specific policy change campaigns.
- **Advocates:** Join our grassroots network to receive updates and act when your elected officials need to hear from you.

Together, we can create a strong foundation for every child by advancing effective policies in our communities. Join us in making a difference at [ncit.org](https://ncit.org)

# Table of **CONTENTS**

- 6** Convening Overview and Goals
- 7** Agenda
- 9** Alabama Landscape
- 11** Alabama Power Sharing Agenda and Next Steps
- 14** Arkansas Landscape
- 16** Arkansas Power Sharing Agenda and Next Steps
- 19** Florida Landscape
- 20** Florida Power Sharing Agenda and Next Steps
- 23** Mississippi Landscape
- 24** Mississippi Power Sharing Agenda and Next Steps
- 26** Texas Landscape, Power Sharing, and Next Steps
- 30** Next Steps for Collaboration Among National Partners
- 33** Trends Across the Five States
- 34** Power Sharing Marketplace
- 42** Learnings Overall
- 43** Give and Get

RESOURCE  
FOLDER



On June 25-26, 2024 the National Collaborative for Infants and Toddlers held the 5-State Power Sharing Convening in Little Rock, Arkansas.

## Convening Overview

This meeting was the first-ever convening to workshop the NCIT's new Prenatal-to-Three (PN3) Power-Sharing Initiative. This event was comprised of State Advocates from the 5-States of Alabama, Arkansas, Florida, Mississippi and Texas as well as 35 National Partners. Together, these five states are home to nearly 20% of the nation's children under age three and have traditionally had a more challenging time passing PN-3 policy. The States were invited to share their experiences and lessons learned with each other, and the National Partners. National Partners were invited to learn from the States and think about ways to combat the chronic 'underinvestment' they often experience in nationwide advocacy efforts.

The event was a unique opportunity for state and local policy advocates to collaborate with the NCIT partners, sharing their ideas, needs, aspirations, and current realities. The discussions and recommendations that came from them will help the NCIT in mapping out ways to do a little more to elevate and build political power to support the unique needs of infants, toddlers, expectant parents, and caregivers.

## Convening Goals

- To explore what it means to share power within a nationwide advocacy movement while building camaraderie and trust as we learn more about each other's superpowers.
- To learn from state and local advocates in five states about the current conditions for Prenatal-to-Three (PN-3) advocacy.
- To develop and deepen relationships within priority states, between priority states, among national partners, and between national partners and state and local PN-3 advocates.
- To challenge the NCIT, as a nationwide advocacy movement, to strengthen the conditions for PN-3 advocacy in the five states in ways that most reflect the aspirations, needs, and wants of the states.
- To map out, together, a specific set of action items with clear next steps and timelines.

## Convening Process & Products

During the two days together, the participants went through two rounds of caucusing as States or National Partners and then came together to share lessons learned and discuss possible next steps going forward. Throughout the event a "Give and Get" asset mapping activity was continuously populated by participants in the room based on their conventions about possible collaborations.

This documentation provides details of the discussions, strategies, and outcomes from this event as well as a comprehensive account of the ideas and proposal generated during the convening.

Questions regarding the process or resulting work products may be directed to the Co-Facilitators:



**Shelby Pierce**  
Pierce Porter Facilitation  
[shelby@pierceporterfacilitation.com](mailto:shelby@pierceporterfacilitation.com)



**Alisa Oyler**  
Partners in Participation  
[alisaoyler@gmail.com](mailto:alisaoyler@gmail.com)

## DAY ONE AGENDA

TIME	DESCRIPTION
8:00 am	Welcome and Opening
8:30 am	Parallel Caucuses: States and National Partners
10:45 am	State Report Outs
12:30 pm	State Report Outs Continued
1:15 pm	CIVITAS Presentation on Current Political Landscape
3:00 pm	Power Sharing Marketplace
5:00 pm	Closing

## DAY TWO AGENDA

TIME	DESCRIPTION
8:30 am	Welcome and Opening
9:00 am	Identifying Power Sharing Opportunities
10:45 am	Developing a Power Sharing Agenda by State and Defining next steps for collaboration among national partners in support of states
12:30 pm	State Caucuses Report Out on Their Priority Next Steps for the NCIT
1:30 pm	Wrap Up and Summary of Action Items
2:00 pm	End of Convening

# ALABAMA



## **Ben Schmauss**

he/him/his  
*National Senior Advocacy Consultant*  
Voices for Healthy Kids and National  
Collaborative for Infants & Toddlers  
[ben.schmauss@heart.org](mailto:ben.schmauss@heart.org)



## **Apreill Hartsfield- Alabama**

Policy/Data Analyst  
VOICES for Alabama's Children  
[ahartsfield@alavoices.org](mailto:ahartsfield@alavoices.org)



## **Dawn Owens- Alabama**

she/her/hers  
[dowens.ops5@gmail.com](mailto:dowens.ops5@gmail.com)



## **Jada Shaffer- Alabama**

she/her/hers  
*Senior Region Lead, State Government*  
*Affairs - Alabama*  
American Heart Association  
[Jada.Shaffer@heart.org](mailto:Jada.Shaffer@heart.org)



## **Jennifer Harris- Alabama**

she/her/hers  
*Senior Health Policy Advocate*  
Alabama Arise  
[jennifer@alarise.org](mailto:jennifer@alarise.org)



## **Rhonda Mann- Alabama**

Executive Director  
VOICES for Alabama's Children  
[rmann@alavoices.org](mailto:rmann@alavoices.org)



## **Ruth Ann Moss- Alabama**

she/her/hers  
*Executive Director*  
Small Magic  
[ruthann@smallmagic.org](mailto:ruthann@smallmagic.org)



## **Zhaundra Jones- Alabama**

she/her/hers  
*Vice President, Philanthropy & Learning*  
Women's Foundation of Alabama  
[zjones@wfalabama.org](mailto:zjones@wfalabama.org)



Advocates shared and learned one another's PN-3 advocacy work and created a sense of cohesiveness around the work being done in their state.

## ALABAMA LANDSCAPE

### What you need to know about our State!

- Alabama has a host of recent small victories that are paving the way for bigger change, such as:
  - investing in early childhood programs such as childcare improvement and Pre-K
  - investing in SNAP incentive programs
  - investing in Summer EBT
  - ensuring postpartum women have Medicaid coverage for up to 12 months
  - improved childcare licensing and standards
  - childcare tax credits for employers, providers and nonprofits, increasing access to childcare
  - reducing the grocery tax
- Strong, Solid, and Rich foundation has been set for implementation for improved childcare standards
- Philanthropy increasingly open to funding policy change, additionally Alabama ranked 27th in charities for reducing poverty per capital
- The conversation around IVF and reproductive rights continues to happen. It also has raised awareness and support for issues women and families face regarding access to health care, childcare and economic security
- Birthing Centers Lawsuit is happening, additionally labor and delivery units are closing across the state
- Alabama incentivizes Quality Rating and Improvement System
- Structural racism policies still exist
- Alabama is a conservative state and is known to lead with it's Christian, family values
- Alabamians and elected officials are proud of Alabama's economy. Currently:
  - Alabama accounts for 1.1% of the US economy
  - It ranks 27th in economy size among states and Washington, DC.
  - Median family income in Alabama is below the national average
  - The state's economy grew by 2.5% in 2023, totaling \$241.8 billion
- Alabama is known for it's rich agricultural
- 55 out of 67 counties in Alabama are considered rural

- Alabama elected its first female Governor in 1963 and again 50 years later in 2018
- As of 2024, of the 140 members of the Alabama Legislature, 26 are women, just 18.57% of the legislative body; up 3% since 2020
- As of 2024, of the 140 members of the Alabama Legislature, 37 are Democrat, and 103 are Republicans
- Alabama has two state budgets, the Education Trust Fund and General Fund. Lawmakers have taken a conservative approach and due to this our budgets are strong
- Alabama ranks 44th in people living in poverty with 800,000 Alabamians, including 256,000 children, living under the federal poverty threshold
- Alabama ranks 45th in access to public transportation
- Alabama ranks 42nd in food insecurity
- More than half of all births in Alabama - 53 percent - are paid for by Medicaid
- Alabama has the highest maternal mortality rate in the nation
- Alabama has the nation's third highest infant death rate
- The gender wage gap in Alabama is wider than in most states and the national average. Women in Alabama earn only 73 cents for every dollar a man earns, compared to 82 cents for U.S. women overall
- 65 percent of children under five have a working single parent or both parents in the labor force, yet there are only enough childcare seats for about 36 percent of children
- Alabama has not expanded Medicaid
- Alabama has preempted policies including minimum wage, fair scheduling, project labor agreements, paid leave and Gig economy

### **What we are awesome at!**

- Nonprofits and coalitions partnering on issues to advance public policy
- Bipartisan support for PN3 issues such as childcare, access to care for women, paid leave and SNAP incentives
- Slowly getting more women elected to champion for PN3 issues
- Approximately 2,046 licensed child care providers in the state are participating in the Quality Rating and Improvement System. However, of those providers, just 262—or 7.8%—have higher than STAR 1 ranking. Programs that have STAR 1 ranking met and maintained all minimum required licensing standards through DHR
- For 18 consecutive years, [Alabama's "First Class Pre-K" program](#) has ranked #1 in the nation

- Alabama ranks 5th in the nation in licensing standards impacting [47 High Impact Obesity Prevention Standards](#)
- Data collection and research ; our research institutions
- Messaging to conservative lawmakers and how issues impact their districts
- The Women's Policy Institute

### **What will it take to improve the conditions for advocacy in our state?**

- Invest in the people doing the work on the ground and in the community
- Respect when advocates come to talk about their lived experiences - "Working for the people includes the people!"
- Balancing how to merge those impacted to create messaging that works for key decision-makers (lawmakers)
- Change the narrative around poverty and social issues not only with lawmakers but with the public
- Having strong coalitions that TRUST each other - Have everyone play different roles
- Funding for staffing coalitions and coalition activities
- More engagement from the business community
- Engaging more advocates and people impacted the political process.
- Funding to hire organizers to help nonprofits recruit and engage volunteers.
- Public awareness campaigns

### **If you know one thing about us, know THIS....**

When we collaborate well, we can get stuff done! We're fighters!

To close out the convening States caucused together to identify and report on the following three things for their states:

- 1) Who else should be invited to the table of PN-3 Advocacy
- 2) Their support asks of the NCIT (including National Partners)
- 3) Next steps to keep the momentum up after this event.

## **ALABAMA POWER SHARING AGENDA AND NEXT STEPS**

### **Who else should be at this table:**

- Dr. Calvin Moore - CEO Council for Professional Recognition
- Jessica Stenson - Alabama Association for Early Child-care
- Cindy Shackelford - Child Development Chair/ Program Coordinator, Jefferson State Community College
- Business Council of Alabama

- Blue Cross Blue Shield
- Alabama Power
- Black Women's Roundtable
- Representatives from the Maternal Health Board
- Hunger Solutions Institute at Auburn
- Academy of Pediatricians- Alabama Chapter
- Alabama Medical Association
- Dr. Hicks- Jefferson County Health Department
- Alabama Partnership for Children
- SPLC
- Appleseed
- Levitate Legal
- Foundations in Alabama including the Bruno Foundation, Goodrich Foundation, Alabama Giving, etc.

**Our support asks of the NCIT (including National Partners):**

- TA around specific PN3 coalition
- Data Collection - Distribute, Translate, and educate
- Messaging - Messaging Testing (Story Telling)
- Advocacy Campaign Training
- Facilitator on bringing organizations together to develop a plan for these policies
- Providing connections to young lawmakers (we have a relatively younger group in the legislature), but also turning them into champions for our issues
- Bipartisan strategies
- Recruitment of business leaders to engage in our advocacy work

**Next steps that would keep momentum up after this event:**

- Inviting State Organizations to Join NCIT
- Gathering More Advocates for Storytelling Opportunities
- Local Convenings



# ARKANSAS



## **Raquel Bueno-Morales**

she/her/hers  
*National Senior Advocacy Consultant*  
Voices for Healthy Kids and National  
Collaborative for Infants & Toddlers  
[raquel.bueno-morales@heart.org](mailto:raquel.bueno-morales@heart.org)



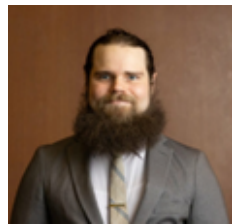
## **Angela Duran - Arkansas**

she/her/hers  
*Executive Director*  
Excel by Eight  
[aduran@excelby8.net](mailto:aduran@excelby8.net)



## **Ashley Bearden Campbell - Arkansas**

she/her/hers  
*Executive Director*  
Arkansans For Improving Maternal  
Health  
[Ashley@aimforarkansas.org](mailto:Ashley@aimforarkansas.org)



## **Bruno Showers - Arkansas**

he/him/his  
State Policy Manager  
Children's Funding Project  
[bruno@brunoshowers.com](mailto:bruno@brunoshowers.com)



## **Cathy May- Arkansas**

she/her/hers  
*Director of SNAP & WIC Outreach*  
Arkansas Hunger Relief Alliance  
[cmay@arhungeralliance.org](mailto:cmay@arhungeralliance.org)



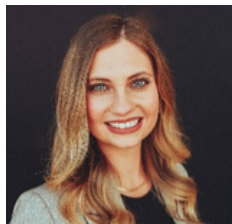
## **Dave Oberembt- Arkansas**

he/him/his  
*Government Relations Director - Arkansas*  
American Heart Association  
[dave.oberembt@heart.org](mailto:dave.oberembt@heart.org)



## **Izzy Montgomery- Arkansas**

she/her/hers  
*Policy Analyst*  
Arkansas Center for Health Improvement  
[efmontgomery@achi.net](mailto:efmontgomery@achi.net)



## **Maddie San Juan- Arkansas**

she/her/hers  
*Director of Strategic Initiatives*  
Women's Foundation of Arkansas  
[msanjuan@womensfoundationarkansas.org](mailto:msanjuan@womensfoundationarkansas.org)



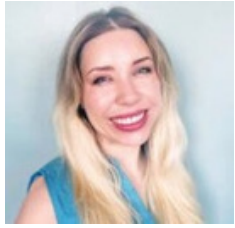
**Mireya Reith- Arkansas**

she/her/ella  
*Founding Executive Director*  
Arkansas United  
director@arkansasunited.org



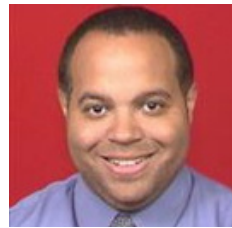
**Peter Gess- Arkansas**

he/him/his  
*Economic Policy Director*  
Arkansas Advocates for Children and Families  
pgess@aradvocates.org



**Val Habrock- Arkansas**

she/her/hers  
*Governmental Affairs*  
Arkansas Advocates for Children and Families  
vhabrock@aradvocates.org



**William Greenfield- Arkansas**

he/him/his  
*Professor Obstetrics and Gynecology*  
UAMS - Arkansas Department of Health  
greenfieldwilliamw@uams.edu

# ARKANSAS LANDSCAPE

## What is going really well in PN-3 Advocacy in our State?

- Attention to maternal health has been at a collective high point; great opportunity to capitalize on momentum; how do we keep the focus here regardless of shifting priorities, funding or challenges?
- AR Advocates for Children and Families - Pushing for presumptive eligibility and having agency support with recommendation to Governor
- Social capital exists and have to channel it into actionable work
- AR DOE is funding local lead organizations; bring together providers to determine gaps in local communities for childcare specifically; bringing folks to the table who have never been to the table; empowering people to have a voice and vote; opportunity to grow the base (not just education but other issues as well)
- "Pearls" - local lead organizations
- Doulas getting organized and having funding

## What are the most entrenched challenges we are tackling?

- Will this initiative be sustainable and workable when the winds shift; will we regress and go back?
- Feels like a race to the bottom right now
- AR is one of the least civically engaged states in the nation; we haven't done enough to engage the public
- Trying to empower more groups to be advocates in the work; explaining difference between c3 and c4 work and what's permissible

## **What we are awesome at! (WINS)**

- Community based organizations continuously come up with innovative strategies
- Doula Alliance of Arkansas formed and funded for 2 years
- Healthy Steps should have 20 sites trained by end of the year
- Creation of governor's maternal health task force and Olivia Walton involvement (putting personal name and brand behind the work)
- Moving to free meals for all kids who qualified for reduced meals
- Seven Pro-immigrant; pro-worker laws over last 3 sessions were passed that create environment for future wins for vulnerable and unexpected communities
- Creation of "Local Lead" organizations that are funded working on gaps in in early childhood space
- Arkansas went from having the highest Latino COVID death rate to highest Latino COVID vaccine rate

## **Pearls**

- Momentum around maternal health
- Focus on the issues and building momentum and collaboration among organizations
- Ability to get things done within a challenging political climate (e.g. laws to support immigrants)
- We have formed a strong coalition to fight the anti-tax policies that are edging their way into Arkansas

## **What will it take to improve the conditions for advocacy in our state?**

- More unrestricted funding resources for advocacy for nonprofit organizations
- Single resource to support nonprofits; used to exist but was dissolved.
- Getting the private sector involved in childcare challenges and understanding the role that they play; need business sector at the capitol
- Build infrastructure to better communicate and share intel; rapid response network
- Create shared spaces of relationship-building and storytelling
- Opportunities for both proactive and reactive agenda-setting
- Services to advocacy pipeline
- Looking at the appointments process

# ARKANSAS POWER SHARING AGENDA AND NEXT STEPS

## **Who else should be at this table:**

- Kenya Eddings (ED of AR Minority Health Commission)
- Moms of color
- DHS
- Better Beginnings
- Medicaid Rep
- Minority Health Commission
- City officials (education lead Jennifer)
- Glasgow - very tied in with Excel by Eight)
- Arkansas Child Care Coalition (access to parent voices)
- County officials
- Any state officials who have a hand in creating change - the friendly potential champions; those who have interest and need to be more informed.
- Walton Family (specifically Olivia) - Heartland Forward, Heartland Summit, Ingeborg Investments
- AR State Chamber of Commerce
- Medical and childcare providers; family medicine doctors
- Workforce champions (Mike Rogers - Chief Workforce Officer for governor; Sec of Commerce, NW Arkansas Council)
- Citizens First Congress
- Urban League
- Doula Alliance
- Rural Community Alliance (Candace Williams)
- Winthrop Rockefeller Foundation

## **Our support asks of the NCIT (including National Partners):**

- Develop a framework to keep 5-State Project states engaged with each other
- As the 5 States develop their PN3 policy platforms find a way to share so states can learn from each other
- Quarterly Zoom meetings with 5 states
- Funding



## Next steps that would keep momentum up after this event:

- Ask NCIT for guidance on affinity group of PN-3 specific donors which would include a CPBO panel
- Define a place to store and disseminate campaign information among the 5 states or group of southern conservative states
- Poll to determine an organizing and scheduling structure for regular meetings among 5 states
- Invite and onboard new partners into the 5 state space
- Ask Excel by Eight if they are having a summer convening and if so, work with them on including an in person nonprofit legal trainings (at existing meetings and among coalitions)
- Identify key groups that could designate a rep for NCIT (e.g. Governor's task force, local leads)
- Bring Dave O's Maternal Health working group together to review the maternal health report – once it's out (early Sept) so that there can be some group-think around it.
- Track/monitor/share national and/or regional opportunities around national funding, gatherings, collaborative fundraising, apprenticeships, resources, etc. that are coming down the pipeline that Arkansas should be aware of/take advantage of.
- Develop a patient centered national model system of maternal care (prenatal and postpartum). Start by researching existing systems of maternal prenatal and postpartum in other states and convene stakeholders to develop a national model.
- Bring the Voices conservative messaging training to Arkansas but also include time to workshop and utilize the training with existing legislators. Tag on a shorty training about what non-profits can and can't do in terms of advocacy/lobbying. But make it a communications focused training.



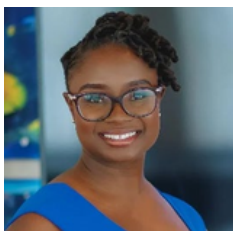
# FLORIDA



**Katie Bishop Kendrick**  
she/her/hers  
*National Senior Advocacy Consultant*  
Voices for Healthy Kids and National Collaborative for Infants & Toddlers  
katie.bishopkendrick@heart.org



**Ashley Houk- Florida**  
*Data Coordinator*  
Help Me Grow Florida  
ahouk@thechildrensforum.com



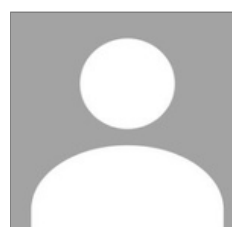
**Esther McCant - Florida**  
she/her/hers  
*CEO*  
Metro Mommy Agency  
metromommyagency@gmail.com



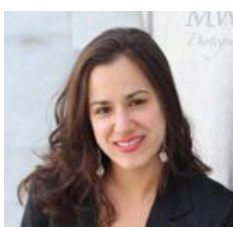
**Holly Bullard- Florida**  
she/her/hers  
*Chief Strategy & Development Officer*  
Florida Policy Institute  
bullard@floridapolicy.org



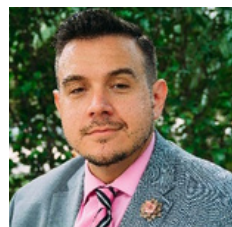
**Keith Richard- Florida**  
he/him/his  
*Vice President of Research*  
Florida Chamber of Commerce Foundation  
krichard@flchamber.com



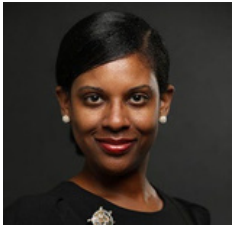
**Nadirah Sabir - Florida**  
she/her/hers  
*Birth Justice Coordinator*  
Southern Birth Justice Network  
admin@southernbirthjustice.org



**Nina Perez - Florida**  
she/her/hers  
*National Director and Florida Director*  
MomsRising  
nina@momsrising.org



**Robert Hill - Florida**  
he/him/his  
*VP Community Impact*  
American Heart Association  
robert.hill@heart.org



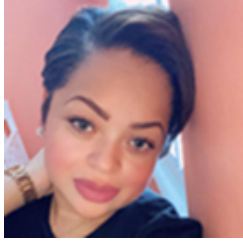
**Tiffany McCaskill Henderson- Florida**

she/her/hers  
Government Relations Director - Florida  
American Heart Association  
tiffany.henderson@heart.org



**Varnessa McCray- Florida**

she/her/hers  
Director, Community Engagement  
The Children's Movement of Florida  
varnessa.mccray@childrensmovementflorida.org



**Yasmina White - Florida**

MomsRising Parent Leader  
MomsRising  
yasmina.white@gmail.com

# FLORIDA LANDSCAPE

## What you need to know about our State!

- Diversity is an asset
- Tallahassee is the only state capitol that isn't a major population center or centrally located within the state, which makes it difficult for community members to come to the capitol.
- Defending policy takes time from being visionary
- Politicizing of DEI terms is a deterrent to policy movement
- Florida is at Least 5 "States" in One!
  - Very different regions within the state – with different cultures, demographics, urban/rural differences, country of origin, age, etc.
  - Some of the Florida counties are larger than states in population.
- Newbie Effect
  - Only about 30% of Florida residents were born in Florida.
  - Large influx of people from other countries.
  - With lots of new folks coming into the state, they do not have inherent Florida pride, they have pride in where they came from. Therefore, they do not feel as attached to what happens in Florida and do not engage in advocacy campaigns.

## What we are awesome at!

- Advocacy for policies that other states do not have resources for
- Ballot initiative process
- Media
  - Good at getting earned media
  - Many Spanish outlets

## **What will it take to improve the conditions for advocacy in our state?**

- More funding
  - General operational and lobbying dollars
- Building capacity and more education about how different organizations can lobby/advocate
  - Both for-profit and non-profit groups need help
- More grassroots for PN-3.
- More organization around vision and not incremental change

**If you know one thing about us, know THIS....** Florida has a lot of partners and community members that want to advocate. We need resourceful support to help advocate for and organize the communities who feel hopeless. We will continue to rise up!

## **Who else should be at this table:**

- Association of Healthy Start Coalition
- Children's Hospitals
- Children's Forum
- Florida's Alliance of Healthcare and Trust
- Association of Early Learning Coalition
- UnitedWay
- Florida Alliance of YMCA
- Dept of Children and Families
- Florida's Health Justice Project
- Florida Voices for Health
- Florida Perinatal Quality Colab PQC
- March for Babies, March for Moms
- National Black Midwives Alliance
- Unidos-Florida
- Pediatrix
- NECTFC
- Alliance for Early Learning
- Managed Care Organization
- Child Welfare Advocates etc.

## **Our support asks of the NCIT (including National Partners):**

- Help removing barriers to grassroots participation: childcare, stipends, language justice, etc.
- Many issue-specific asks:
  - Lobbying dollars for Medicaid expansion
  - Help getting and staying in the room for the Doula bill.
  - Leave behind one-pagers on Summer EBT
- The group had a lot of questions about what they could request.
- These are the asks that were made in AR, but there are a lot of additional needs in Florida. The group is happy to compile a more complete list.

## **Next steps that would keep momentum up after this event:**

- Follow up to Florida early care and education partner mapping with Santi
- Recruitment materials for other Florida organizations
- Infrastructure to keep state meetings goings

## **In addition to the organizations that were together in Arkansas, here is a list of additional Florida NCIT members:**

- 211 Palm Beach Treasure Coast
- Catalyst Miami
- Children’s Trust of Alachua County
- Early Learning Coalition of Northwest Florida
- Empowering Early Learning Educators
- First 1000 Days Florida
- Florida Association for Infant Mental Health
- Florida Chapter of the American Academy of Pediatrics
- Florida Head Start Association
- Florida Impact
- Healthy Start Coalition of Southwest Florida, Inc,
- Heart of Florida United Way, Help Me Grow Program
- The Women’s Fund of Miami-Dade
- Urban Health Partnerships



# MISSISSIPPI



## **Danielle Patterson**

*National Senior Advocacy Consultant*  
Voices for Healthy Kids and National Collaborative for Infants & Toddlers  
[Danielle.patterson@heart.org](mailto:Danielle.patterson@heart.org)



## **Biz Harris- Mississippi**

she/her/hers  
*Executive Director*  
Mississippi Early Learning Alliance  
[biz@msearlylearning.org](mailto:biz@msearlylearning.org)



## **Carol Burnett- Mississippi**

she/her/hers  
*Executive Director*  
Mississippi Low Income Child Care Initiative  
[cburnett@mschildcare.org](mailto:cburnett@mschildcare.org)



## **Cassndra Welchlin - Mississippi**

she/her/hers  
*Executive Director, Mississippi Black Women's Roundtable*  
[cwelchlin@msbwr.org](mailto:cwelchlin@msbwr.org)



## **Desiree States- Mississippi**

she/her/hers  
*Program Director*  
Mississippi Families for Kids  
[Dstates@mffk.org](mailto:Dstates@mffk.org)



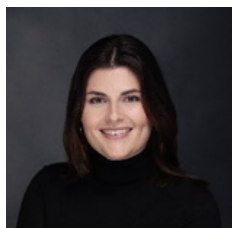
## **Erica Thompson- Mississippi**

she/her/hers  
*Executive Director*  
Magnolia Medical Foundation  
[ethompson@magmedfound.org](mailto:ethompson@magmedfound.org)



## **John Dillon Harris- Mississippi**

he/him/his  
*Health Policy Consultant*  
Center for Mississippi Health Policy  
[jharris@mshealthpolicy.com](mailto:jharris@mshealthpolicy.com)



## **Laken Camp - Mississippi**

she/her/hers  
*Government Relations Director - Mississippi*  
American Heart Association  
[Laken.camp@heart.org](mailto:Laken.camp@heart.org)



**Melanie Powell- Mississippi**

she/her/hers  
Executive Director  
Women's Foundation of Mississippi  
melanie@womensfoundationms.org



**Micayla Tatum- Mississippi**

she/her/hers  
Director of Early Childhood Policy  
Mississippi First  
micayla@mississippifirst.org



**Nakeitra Burse- Mississippi**

she/her/hers  
Executive Director  
Six Dimensions  
nburse@sixdims.com



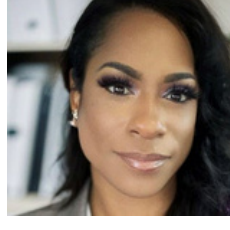
**Robin Jackson- Mississippi**

she/her/hers  
Director of Policy, Advocacy, and  
Movement Building  
Mississippi Black Women's Roundtable  
rjackson@msbwr.org



**Sarah Stripp- Mississippi**

she/her/hers  
Program Director  
Springboard To Opportunities  
sstripp@springboardto.org



**Tonya Ware- Mississippi**

she/her/hers  
State Director  
ReadyNation Mississippi  
TWare@readynation.org

# MISSISSIPPI LANDSCAPE

## What you need to know about our State!

- There is an extremely challenging political climate for passing certain policies on behalf of people who need us to win on specific issues. The South can still be deeply rooted in racism in some ways.
- MS, historically conservative, currently with a supermajority Republican Legislature. During the last gubernatorial election, the Democrats lost by 13%. In order to have meaningful change, we have to increase voter turnout. If voter turnout increases by five people in certain precincts, a new progressive Governor can be elected. This is our reality, so how do we navigate it? With 13% needed for meaningful change.
- We have 82 counties, most of them rural.
- There's fertile ground for policy change and implementation.

## What we are awesome at!

- Building relationships among organizations.
- Ensuring that people from the community are centered and are in the rooms they should be in.
- Recent movement: Great coalition work to move Medicaid Expansion.
- Really good at organizing and pivoting policy priorities.

## What will it take to improve the conditions for advocacy in our state?

- Understanding there can be multiple narratives used to educate and pass policies and use services.
- Empowering families to be their own advocates—then MOBILIZE this power. However, other supports must also be provided so the burden is not placed exclusively on the people who are most impacted.
- There's a need for education and outreach (getting information to people outside of Jackson, MS). Connect people to their legislators out of session in their community.
- Implementation is crucial. We need advocates and funders at the table for regulatory process. Use relationships with state agencies to push them for implementation.
- We need more relationship-building with people in power outside of policy time. We need more and different messengers (e.g., businesses and CBOs).
- Funding accountability. We need to tell constituents how their money is being spent. Additionally, funding is needed for lobbying work, detailed financial and other key reports, and for more staff.
- Accountability with state agencies. It's very challenging to get funding from state agencies.

**If you know one thing about us, know THIS.... WE WON'T QUIT! WE LOVE OUR PEOPLE!**

## MISSISSIPPI POWER SHARING AGENDA AND NEXT STEPS

### Who else should be at this table:

- Nutrition/breastfeeding advocates, Early Head Start, economic partners, racial justice organizations, birth workers

### Our support asks of the NCIT (including National Partners):

- Unrestricted funding, strategic planning support, repository of campaign best practices/failures, structure (calls, meetings) to keep momentum going

### Next steps that would keep momentum up after this event:

- Come to MS and we pack the room!





# TEXAS



## **Erica Phung**

she/her/hers  
*National Senior Director of Advocacy*  
Voices for Healthy Kids and National  
Collaborative for Infants & Toddlers  
[erica.phung@heart.org](mailto:erica.phung@heart.org)



## **Adrianna Cuéllar Rojas- Texas**

she/her/hers  
*CEO*  
TexProtects  
[adrianna@texprotects.org](mailto:adrianna@texprotects.org)



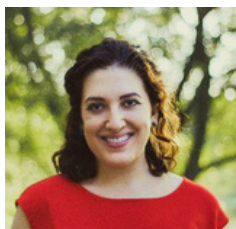
## **Alec Puento - Texas**

he/him/his  
*Government Relations Director - Texas*  
American Heart Association  
[Alec.puento@heart.org](mailto:Alec.puento@heart.org)



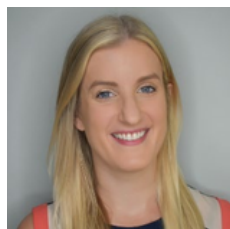
## **Alex Chandler- Texas**

he/him/his  
*Chief Communications Officer*  
AVANCE Inc  
[achandler@avance.org](mailto:achandler@avance.org)



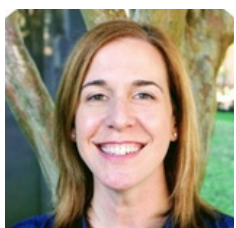
## **Erin O'Malley- Texas**

she/her/hers  
*Senior Policy Analyst*  
Every Texan  
[omalley@everytexan.org](mailto:omalley@everytexan.org)



## **Jamie Olson- Texas**

she/her/hers  
*Director of Policy & Advocacy*  
Feeding Texas  
[jolson@feedingtexas.org](mailto:jolson@feedingtexas.org)



## **Mandi Kimball- Texas**

she/her/hers  
*Vice President*  
Children at Risk  
[mkimball@childrenatrisk.org](mailto:mkimball@childrenatrisk.org)



## **Stephanie Rubin- Texas**

she/her/hers  
*CEO*  
Texans Care for Children  
[Srubin@txchildren.org](mailto:Srubin@txchildren.org)

# TEXAS LANDSCAPE

## **What you need to know about our State!**

- Texas is a proud state that likes to follow its own lead. Our state often contradicts itself in strategy and priorities.

## **What will it take to improve the conditions for advocacy in our state?**

- Funding - Commitment for Long Term Investment
  - Political campaigns focused on leadership positions
  - Advocacy campaigns to pass policy
  - Implementation campaigns to support state agencies and community capacity
  - Building appeal across the conservative political spectrum
    - Parents Rights, Strong Families, Streamlined Government, Better systems prevent fraud, etc.
    - Preemption strategy
      - Balancing what works State vs. Local, Urban vs. Rural, City vs. Suburbs

## **If you know one thing about Texas, know THIS....**

We have good people and good communities mostly motivated by good intentions...  
But there is often the feeling that it's Texas vs. Everyone

# TEXAS POWER SHARING AGENDA AND NEXT STEPS

## **Who else should be at this table:**

- Early Matters – Early Childhood Coalition
- State Agency Partners - To help with implementation, some are funders for coalitions
- Groups who fill issue gaps, those who understand what is needed within the state for different policies
- Connection with groups from other states working on family wellbeing (i.e., child abuse prevention, formal kin support, etc.)

## **Our support asks of the NCIT (including National Partners):**

- Money. Texas is a big state with few statewide funders and without long term funding investments. (e.g., Funding for Kids Count data collection (current funder stopping) - information is widely used within advocacy.)
- Collection of state-based messaging: Messaging resources uplifting specific tried and tested language from states

- New lawmaker education resources - maybe templates to build out on how to educate lawmakers • Media roundtable for PN-3 issues
- Information on how to start a C4 - what it is, how they are used, how to get one started, etc.
- Leadership Development Cohort - support for new and upcoming leaders within the movement, support for managers, EDs, etc., mentorship opportunities, networking
- "Failing Forward" - session focused on lessons learned from failure
- Continuing to convene and be the leader in the PN-3 space

**Next steps that would keep momentum up after this event:**

- Recognize that the bar needs to be different in some states vs. others. For example, Medicaid expansion is a North Star, but it is not achievable right now.
- Use energy to support an umbrella approach to incremental steps.
- Family support steps – TX does not have a prevention plan. Can we talk about having a prevention plan? Can we use it to fund certain things not tied to child welfare? In the past, even having a prevention plan was not attainable.
- Collectively set attainable goals related to defense.
- Identifying, setting, and celebrating incremental wins, including successful defense efforts! Creating our own North Stars!
- Continuing to convene and be the leader in the PN-3 space. (This fits in both the support asks and momentum categories!)



# NATIONAL PARTNERS



**Christy Ross**  
she/her/hers  
NCIT Steering Committee Co-Chair  
LA ECE Collaborative  
[christyross32@gmail.com](mailto:christyross32@gmail.com)



**Cynthia Osborne**  
she/her/hers  
Professor of Early Childhood Education  
and Policy, Executive Director  
Prenatal-to-3 Policy Impact Center  
[cynthia.osborne@vanderbilt.edu](mailto:cynthia.osborne@vanderbilt.edu)



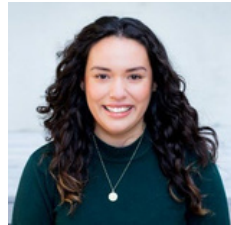
**Emily Workman**  
she/her/hers  
Managing Director  
Prenatal-to-3 Policy Impact Center  
[e.workman@vanderbilt.edu](mailto:e.workman@vanderbilt.edu)



**Fred Jones**  
he/him/his  
Senior Director of Public Policy and  
Advocacy  
Southern Education Foundation  
[fjones@southerneducation.org](mailto:fjones@southerneducation.org)



**Hailey Gibbs**  
she/her/hers  
Senior Policy Analyst  
Center for American Progress  
[hgibbs@americanprogress.org](mailto:hgibbs@americanprogress.org)



**Hannah Oppermann**  
she/her/hers  
State Policy & Program Manager, Child  
Care & Early Learning  
National Women's Law Center  
[hoppermann@nwlc.org](mailto:hoppermann@nwlc.org)



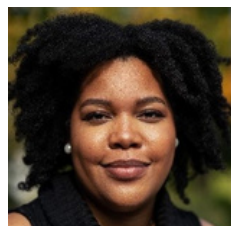
**Ian Pfeiffer**  
he/him/his  
Maryland State Director  
State Innovation Exchange (SiX)  
[ian@stateinnovation.org](mailto:ian@stateinnovation.org)



**Jared Busker**  
he/him/his  
Senior State Advocacy Specialist  
ZERO TO THREE  
[JBusker@zerotothree.org](mailto:JBusker@zerotothree.org)



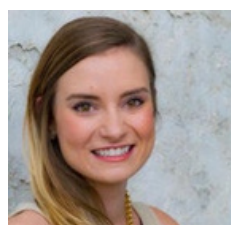
**Jessica Garland**  
she/her/hers  
Senior Associate, Legislative Affairs  
State Innovation Exchange (SiX)  
[jessica@stateinnovation.org](mailto:jessica@stateinnovation.org)



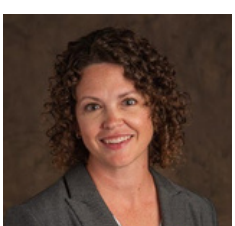
**Kameron Dawson**  
she/her/hers  
Senior Staff Attorney  
A Better Balance  
[kdawson@abetterbalance.org](mailto:kdawson@abetterbalance.org)



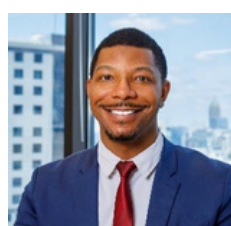
**Karina Burciaga**  
she/her/hers  
Advocacy Support Specialist  
Abriendo Puertas/Opening Doors  
[execsupport@ap-od.org](mailto:execsupport@ap-od.org)



**Kathryn Rehner-Sullivan**  
Mission Advancement Advisor  
American Heart Association  
[kathryn.rehner-sullivan@heart.org](mailto:kathryn.rehner-sullivan@heart.org)



**Kelly Crane**  
she/her/hers  
Policy & Government Relations  
Manager  
Prevent Child Abuse America  
[kcrane@preventchildabuse.org](mailto:kcrane@preventchildabuse.org)



**Lee Johnson III**  
he/him/his  
Senior Fellow, Early Childhood Education  
Southern Education Foundation  
[ljohnson@southerneducation.org](mailto:ljohnson@southerneducation.org)



**Lisa Matter**

she/her/hers  
NCIT Steering Committee/Independent  
Consultant  
[lisamatter@gmail.com](mailto:lisamatter@gmail.com)



**Lori Fresina**

she/her/hers  
VP Executive Director  
Voices for Healthy Kids and National  
Collaborative for Infants & Toddlers  
[lori.j.fresina@heart.org](mailto:lori.j.fresina@heart.org)



**Mandy Ableidinger**

she/her/hers  
Senior Policy Director  
Alliance for Early Success  
[mableidinger@earlysuccess.org](mailto:mableidinger@earlysuccess.org)



**Marquita Little Numan**

she/her/hers  
Executive Director  
Partnership for America's Children  
[mnuman@foramericaschildren.org](mailto:mnuman@foramericaschildren.org)



**Melodie Baker**

she/her/hers  
CEO  
ImpactSTATS Inc.  
[melodie@impactstats.org](mailto:melodie@impactstats.org)



**Morgan Reiss**

she/her/hers  
Policy & Communications Specialist  
Help Me Grow National Center  
[MReiss01@connecticutchildrens.org](mailto:MReiss01@connecticutchildrens.org)



**Nancy Fishman**

she/her/hers  
Senior Advisor  
ReadyNation at Council for a Strong  
America  
[nfishman@readynation.org](mailto:nfishman@readynation.org)



**Nighisti Dawit**

she/her/hers  
Senior Project Manager, Policy Initiatives  
Center on the Developing Child at  
Harvard University  
[nighisti\\_dawit@harvard.edu](mailto:nighisti_dawit@harvard.edu)



**Paige Falion**

she/her/hers  
Associate Director  
Association of Maternal & Child Health  
Programs  
[pbussanich@amchp.org](mailto:pbussanich@amchp.org)



**Paige Ferguson**

she/her/hers  
Policy Innovation Lab Director  
Future Caucus  
[paige@futurecaucus.org](mailto:paige@futurecaucus.org)



**Sunny Lane**

she/her/hers  
Senior Institutional Relations Advisor  
American Heart Association  
[sunny.lane@heart.org](mailto:sunny.lane@heart.org)



**Suzanne Wikle**

she/her/hers  
Associate Director for State Health  
Policy  
and Advocacy  
Center for Law and Social Policy  
[swikle@clasp.org](mailto:swikle@clasp.org)



**Tania Villarroel**

she/her/hers  
Senior Policy Analyst  
UnidosUS  
[tvillarroel@unidosus.org](mailto:tvillarroel@unidosus.org)



**Tiwani Oseni**

she/her/hers  
Community Engagement Manager  
HealthConnect One  
[toseni@healthconnectone.org](mailto:toseni@healthconnectone.org)



**William Devine**

he/him/his  
Senior Associate  
Civitas Public Affairs  
[williamtdevine@gmail.com](mailto:williamtdevine@gmail.com)

# NEXT STEPS FOR COLLABORATION AMONG NATIONAL PARTNERS

National Partners, after hearing from the States at length, took time together to think strategically about how to support State efforts. Their aim was to identify ways in which they could provide customized and targeted supports, with a lens towards equity to address the gap in supports these States have long suffered. They began this process with discussions to summarize what they learned about the strengths to build on in each state and as well as lesson's the States have learned that could shape some strategic support. They then discussed possible common themes among the states, before identifying a few high potential support efforts that might benefit from collaboration among the partners.



## ALABAMA

### **What strengths can we build on?**

- Finding opportunities for policy change
- Success of AL Pre-K and recent tax credit win
- Good relationships with partners, community and lawmakers (collaboration)
- State agency Dept. of Child Abuse Prevention ROI data

### **What lessons learned can we help apply?**

- Quality rating improvement systems (QRIS) - concept and opportunity (Strength & Collaboration)
- Opportunities to explore community partners who need support
- Peer learning across issue areas
- Streamlining communications and messaging
- Leveraging partnerships with groups that have religious affiliations

# ARKANSAS

## What strengths can we build on?

- Doula alliance
- MCH taskforce
- Proven track record in building momentum (Latino vaccine rate)
- Creative messaging and narrative change too
- Known MCH champions at the state level
- Foundation of good policy
- Relationships with lawmakers

## What lessons learned can we help apply?

- Philanthropic community support and working together

# FLORIDA

## What strengths can we build on?

- Strong media market
- Ballot initiative process
- Building on existing wins - \$15 minimum wage
- Community based org and policy
- "Newbie effect" that brings in new voices, "external" thoughts/pressures

## What lessons learned can we help apply?

- Capacity building
- Vision goals
- Need to call people in to build community more on local levels ("5 Floridas")
- Engagement of business community
- More flexible funding opportunities

# MISSISSIPPI

## What strengths can we build on?

- Great relationship builders and organizers
- Lots of organizations/partners in EC space
- Lots of success in PreK/ECE advocacy, which could be leveraged to include other EC policy areas as well
- Celebrate momentum of EC issues (i.e. Medicaid expansion)

## What lessons learned can we help apply?

- Building on incremental policy wins
- Support collaboration among all the partners
- Need for explicit strategies to combat structural racism that is embedded deeply in legislature
- Multiple messaging frames to build narratives that reach diverse audiences
- Invest in rural organizing partners (and legislative bootcamps?) cross-state angle
- Resourcing legislators to understand how PN3 policies affect them
- Rapid response resourcing and planning for “surplus” position

# TEXAS

## What strengths can we build on?

- Parental rights and strong family messaging – can be co-opted
- Independent
- Long-term Medicaid campaign
- Maternal health campaign win
- Progressive cities
- Austin as Capitol (+/-)
- So big, so diverse
- Let us lead! We want to be first/best!

## What lessons learned can we help apply?

- Story bank – data – keep TI/Healing centered approaches
- Who are the messengers? What are the resonant messages?
- Different messengers – faith community, business?, who in the Parents Rights
- Other states look to Texas



# TRENDS ACROSS THE FIVE STATES

## What are distinctions/uniqueness' in these 5 states (re PN3 advocacy)?

- Be public vs be stealth
- Messaging: informed by a customized racial equity analysis tool – using different words à shaping public messaging
- Supporting advocates to engage local funders, in coalition, diversifying funding for coalition building, etc.
- National lens on local and specific funding à dedicated hire(s) to track
- Leverage our relationships
- Messengers - Engaging a variety of business and other champions
- Rural community policy and implementation (cross state)

## Possible Collaborations

- Series or theme of highlighting “failures” (including defensive wins), celebrating and learning from them; infuse trainings, etc. including next effort on the same issue
- Each state sets the agenda for meetings on a monthly basis – NCIT facilitates (virtually) – each meeting focuses on a different aspect of a policy or campaign
- National convenor shares notes, feedback and linkages between state meetings, link Give & Gets proactively
- No strings attached, rotating facilitation (co-facilitation); no slides allowed
- Cross state convening - State/National and legislators building relationships



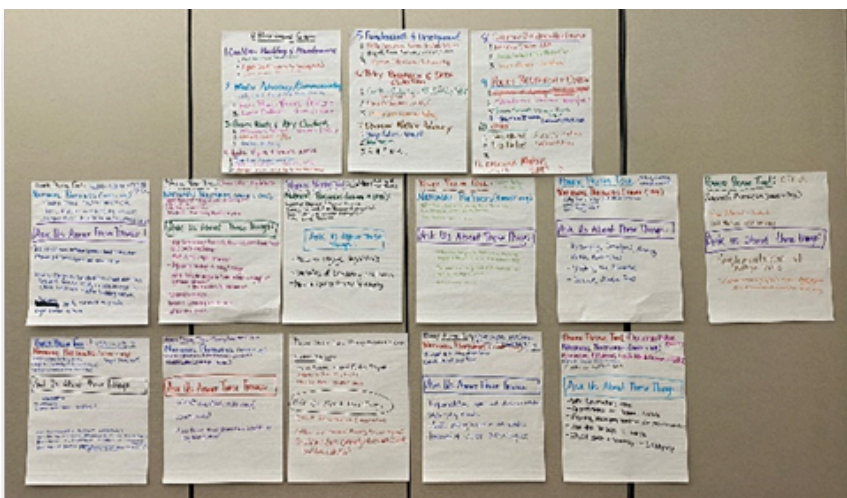
# POWER SHARING MARKETPLACE

National Partners self-selected into a Power Prism category that aligned with the resources offered by their organization to form a table with other National Partners. Each table listed what to “Ask Us About” as a conversation starter, while State Advocates were encouraged to go wherever they were interested in learning more and to ask as many questions as possible. States largely drove the conversations while Partners listened and answered questions through 4 rounds of dialogue.



# POWER SHARING REFLECTION

State’s were asked, What was a helpful nugget you received? Partners were asked, What trends did you notice across the three groups?



## National Partners (Table 6)

- Cynthia Osborn, PN3 Policy Impact
- Hannah Oppermann, NWLC
- Hailey Gibbs, Center for Am Progress

### Ask us about:

- What are other states doing?
- What works?
- How do we show short-term benefits of long-term policies?

## National Partners (Table 9)

- Melodie Baker, Impact STATs INC
- Stephanie Scarmo, Voices / NCIT
- Bruno Showers, Children & Funding Project

### Ask us about:

- What are other states doing?
- What works?
- How do we show short-term benefits of long-term policies?

## REFLECTIONS

- Making a strong case to the business community helped by a Partner who is already working on a white paper about how Child Care Paid Family Leave and Nutrition Security - meaningful to impact on employees in businesses
- Create research to be shared to legislatures and communities - frameworks that center that family - a shift in the way we are articulating the things we know to be true. Humanization of the data.
- **Trends:** Lack of disaggregation of data, specifically by race in the states. States opting out of federal data collection. Qualitative interviews may be a way to fill a gap, externally funded, if goals are aligned. Or use of existing federal data - though it may be dated. Starting somewhere. Ensuring it's lead by community members.
- **Trends:** How to communicate the benefits to businesses, through cost savings or otherwise.

# DECISION MAKER ADVOCACY

## National Partners (Table 7)

- Paige Falion, AMCHP
- Paige Ferguson
- Will Devine

### Ask us about:

- Why lawmakers care
- Opportunities for federal funding
- Framing/messaging strategies for decision makers
- How the sausage is made
- C3/C4 divide and strategy and lobbying

## National Partners (Table 11)

- Emily Workman, PN3 Policy Impact Center
- Suzanne Wikle

### Ask us about:

- Implementation issues with decision makers
- State policy trends
- What's moving issues in red states
- Benefit cost analysis

## REFLECTIONS

- Getting the really great cost and benefit analysis for our legislatures - because it's a key benefit for them. Just reach out and ask. Having a connection and being told that we want to help makes a difference in staying motivated to take action
- Perception that all politics is local - becoming flipped as local bodies are being driven by national narratives. Need to figure out how to put the issue or topic of discussion into those gaps in the national narratives.
- **Trends:** Messaging and framing - i.e. all politics are local shift to what resonates to the different audiences. Messaging appreciation for the work that policymakers are doing or have already done.
- **Trends:** Cost of policies and the misinformation within the states - and the need to be able to provide more accurate information about the real costs of policies - with the cost benefit analysis of policies that benefit children and families - which WE provide

## **National Partners (Table 2)**

- Kelly Crane, Prevent Child Abuse America
- Lori Poag, Voices / NCIT
- Laura Coleman - Voices / NCIT

## **Ask us about:**

- Messaging strategies, framing
- Media relationships
- Shifting the narrative
- Social media tools

## **REFLECTIONS**

- Local organizations aren't tagging local media
- Could be using collaborations with other organizations more than they are
- Like minded organizations teaming up to get messages out amplify across networks
- Consistency: social and all media are a job in themselves. With a social media manager, try to create a calendar or schedule to stay on top of regular postings.
- Iz - Building relationships with news reporters is always a worthwhile investment. This is their job and you can tailor to the issues they care about, then tag them in messages.
- Repeated messages can increase their impact. Same story same ask.
- Tag reporters!

# GRASSROOTS AND KEY CONTACTS

## National Partners (Table 3)

- Maura Devine, Voices / NCIT
- Karina Burciaga, AP / OD
- Nina Perez, Moms Rising
- Sally Pulleo, All Our Kin

## Ask us about:

- How can we engage family childcare educators/home-based childcare in advocacy?
- Moms as the original organizers
- Organizing strategy vs policy strategy
- What tools are needed to communicate and engage with grassroots advocates?
- How to reach rural communities
- National connections
- Organize communicate centered events
- Uplift parent voice

## REFLECTIONS

- Reporting for foundations that struggle to get grassroots orgs to complete their reports. Maybe provide them with a survey to help them with their report. Do one report and not two.
- **Trends:** Every group involves storytellers in building relationships.
- **Trend:** How to find common ground to overcome silos in grassroots organizations and/or movements.

## National Partners (Table 5)

- Mandy Ableidinger, Alliance for Early Success
- Raquel Bueno-Morales, Voices / NCIT
- Marquita Little Numan, The Partnership

## Ask us about:

- How do funders support lobbying?
- How do you cultivate relationships with funders?
- How do you ID/prospect funders in advocacy space?
- How are we shaping our prioritization around equity?

## REFLECTIONS

- There is someone in my area that is doing the work - conversation with them. Scheduled a meeting!
- A couple people in the room, conversations re: the Research areas they are interested in and what we're funding.
- **Trend:** Request for funding for advocacy specifically. Especially, organizations for whom that's not their main area.
- **Trend:** Varied needs.

## National Partners (Table 1)

- Fred Jones / Lee Johnson (SEF)
- Nighisti Dawit, Center on the Developing Child
- Jared Busker: Zero to Three

### Ask us about:

- Effective strategies for building and sustaining support mechanisms for cross-state resource sharing
- The science of early childhood development and how it can help shape conversations
- Building and maintaining relationships

## National Partners (Table 8)

- Kameron Dawson, ABB
- Jessica Garland & Ian Pfeiffer (Six)
- Nancy Fishman, Ready Nation

### Ask us about:

- How to engage legislators
- Benefits of broadening coalitions
- How to develop shared messaging

## REFLECTIONS

- Trying to understand different models and frameworks for coalitions, and how to build them for the long term. Identifying intermediate policy goals - was helpful. Focus on the goal of the coalition - which may be the policy or the infrastructure of the coalition itself
- Ask partners what are the systemic changes that are needed for them to do their work better
- Asset mapping exercises provided by NCIT, supporting implementation follow through with decision makers on action plans, reporting out on the action steps, engaging and debriefing staffers with one pagers
- Praising legislatures when they are doing the right things in those spaces
- **Trends:** The need for accessible advocacy materials, shared messaging for coalition partners, and community members who are interested even if they are not in the coalition, how to engage them in an equitable way that takes into account racial/economic/gender justice.
- Relationships take time. Coalition building takes time. Go slow to go farther together.



# HEALTH EQUITY AND RACIAL JUSTICE

## National Partners (Table 4)

- Tiwani Dseni, Health Connect One
- April Wallace, Voices / NCIT
- Morgan Reiss, Help Me Grow National

### Ask us about:

- The connection between community-based birth worker programs and health, equity and racial justice
- How a targeted universalism framework can advance health equity and racial justice in early childhood system building efforts
- Building equity mindset to shift organization culture

## REFLECTIONS

- How we frame the narrative into an asset framing as opposed to what's missing. Shifting the storytelling to an asset rather than a negative
- Using historical information to build out the stories.
- Trends: the narrative of creating the stories and how to talk about equity and racial justice in conservative states
- Incredible health justice focused work within the states
- Qualitative data isn't enough most of the time. In order to get people to care, need to see faces. It can sometimes feel overwhelming, or like trauma dumping but it's important to connect directly to true stories.

## OTHER

## National Partners (Table 4)

- Tania Villarroel - UnidosUS (Latinos)
- Lisa Matter (Implementation)

### Ask us about:

- Implementation at multiple levels
- Latino community specific needs, dual language learners
- Early childhood education, workforce, home visiting

## REFLECTIONS

- Sometimes we need to cut corners, may not always prioritize community voices that I need to include - but that can't be the standard operating practice. NEED to have local voices - especially in developing messages and testimonials that can be shared.
- **Trends:** bottlenecks. People. (re implementation) All of the best of the tools apply at every level. If the bottleneck is at any level, you might need ALL of the tools. There might be a need for placing people who can help with bottlenecks / bottleneck navigators.

# LEARNINGS OVERALL

- We have more in common than we have differences. We all have the same goal, but we are just doing it in different ways. Wonderful to hear how people are overcoming obstacles. Hope to stay connected.
- A lot of us have contested messaging in the states, how can states talk to each other about the learnings they have gathered in their trial and error of messaging. I.e. - use of workforce laws, or global assets training to pass immigration legislation - cross pollination and analysis of messaging across states
- Heard a lot about successes / what works. But we can learn so much from failures, and it's really helpful to hear what was tried and didn't work. I.e. the bills that get killed - so much to learn from those
- We're all doing offense and defense at the same time - and they require a lot of capacity.
- Funders at the national level, often competing, a lot of similarities but we also differ greatly in our strengths. Difficult when funders are limiting their scope across geographies or gaps.
- These people (policy in hard states) are MY people. And this work is intergenerational, people have come before you and will continue after and we have to be careful of the burnout.



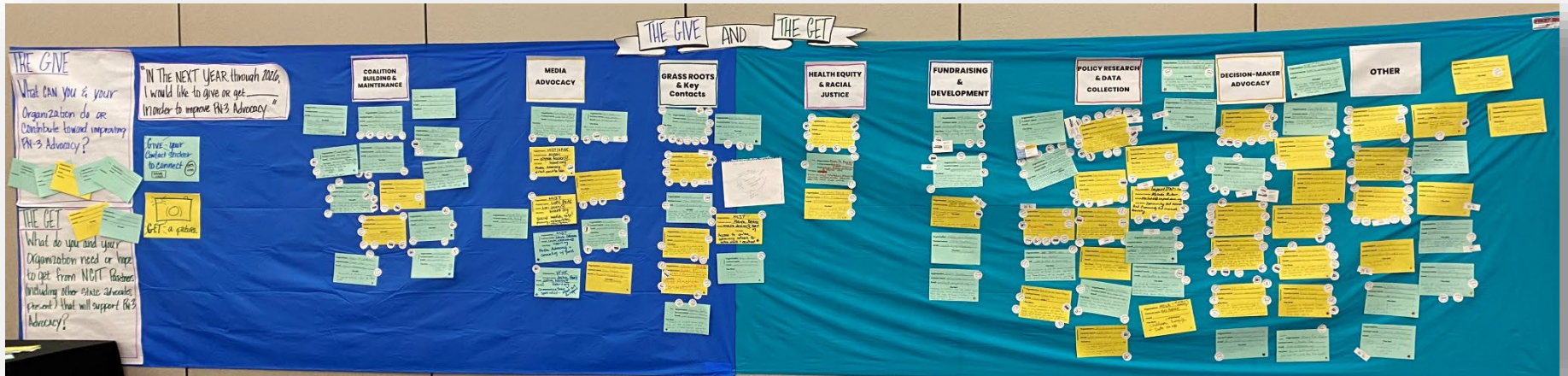
# The Give and Get

Throughout the event a “Give and Get” asset mapping activity was continuously populated by participants in the room based on their conventions about possible collaborations. Below are the resources shared and requested.

## Definitions:

The Give: *What can you and your organization do or contribute toward improving PN-3 advocacy?*

The Get: *What do you and your organization need or hope to get from NCIT partners (including other state advocates present) that will support PN-3 advocacy?*



## Policy Research & Data Collection

Give/Get	Details	Organization	Contact Name	Would like to connect:
Give – AR	<p>Sharing infographics/maternal health analytic projects and methods/approach. Check out <a href="http://www.achi.net/maternal-infant-health">www.achi.net/maternal-infant-health</a></p> <p>Examples: Teen births and birth space in AR; Driving distance to delivery AR; racial alignment of delivering MOW/provider</p>	AR Center for Health Improvement	<a href="#">Izzy Montgomery</a>	<ul style="list-style-type: none"> <li>Jennifer Harris (AL) – Alabama Arise</li> <li>Paige Ferguson (NP) – Future Caucus</li> </ul>

## Policy Research & Data Collection

Give/Get	Details	Organization	Contact Name	Would like to connect:
Give – FL	The Florida Chamber Foundation maintains the FL Gap Map ( <a href="http://flchamber.com/floridagapmap">flchamber.com/floridagapmap</a> ) and <a href="http://thefloridascorecard.org">thefloridascorecard.org</a> , which include various data points related to the root causes of poverty, comparing each Florida zip code and county. These have been an effective tool to have local level conversations around childcare and early learning. Florida Chamber Foundation can host a webinar to discuss further; this could be developed and implemented in other states. We also do a good job connecting the business community to these data tools, we could discuss that strategy too.	Florida Chamber of Commerce Foundation	<a href="#">Keith Richard</a>	<ul style="list-style-type: none"> <li>▪ Ashley Houk (FL) – Help Me Grow Florida</li> <li>▪ Emily Workman (NP) – Prenatal-to-3 Policy Impact Center</li> <li>▪ Esther McCant (FL) – Metro Mommy Agency</li> <li>▪ Nancy Fishman (NP) – ReadyNation at Council for a Strong America</li> <li>▪ Paige Falion (NP) – AMCHP</li> <li>▪ Paige Ferguson (NP) – Future Caucus</li> <li>▪ Tiffany McCaskill Henderson (FL) – American Heart Association</li> </ul>
Give – MS	<ul style="list-style-type: none"> <li>▪ State and federal policy/programs – research and analysis</li> <li>▪ Data resource and analysis</li> <li>▪ Resource mapping</li> <li>▪ Technical reporting</li> </ul>	Center for Mississippi Health Policy	<a href="#">John Dillon Harris</a>	
Give – TX	Pairing policy and community expertise to build health, wealth and power using “feedback loops” we manage across the state	Every Texan	<a href="#">Erin O’Malley</a>	<ul style="list-style-type: none"> <li>▪ Alec Puente (TX) – American Heart Association</li> <li>▪ Paige Ferguson (NP) – Future Caucus</li> <li>▪ Tania Villarroel (NP) – Unidos US</li> </ul>
Give – NP	Policy expertise across a variety of issues, including Medicaid, SNAP, child care, immigrants’ access to benefits, and worker justice	Center for Law and Social Policy	<a href="#">Suzanne Wikle</a>	<ul style="list-style-type: none"> <li>▪ Dawn Owens (AL) – VOICES for Alabama’s Children</li> <li>▪ Esther McCant (FL) – Metro Mommy Agency</li> <li>▪ Hailey Gibbs (NP) – Center for American Progress</li> <li>▪ Kameron Dawson (NP) – A Better Balance</li> </ul>

## Policy Research & Data Collection

Give/Get	Details	Organization	Contact Name	Would like to connect:
				<ul style="list-style-type: none"> <li>▪ Peter Gess (AR) – Arkansas Advocates for Children and Families</li> <li>▪ Tiffany McCaskill Henderson (FL) – American Heart Association</li> </ul>
Give – NP	<ul style="list-style-type: none"> <li>▪ Evidence of effective policies</li> <li>▪ Landscape scans of what other states are doing to equitably implement policies</li> <li>▪ Benefit-cost analysis for your state on paid leave, EITC, and childcare</li> <li>▪ Presentations to policy leaders on why PN-3 matters and evidence of what works</li> </ul>	Prenatal-to-3 Policy Impact Center	<a href="#">Cynthia Osborne</a> & <a href="#">Emily Workman</a>	<ul style="list-style-type: none"> <li>▪ Adrianna Cuéllar Rojas (TX) – TexProtects</li> <li>▪ Cathy May (AR) - Arkansas Hunger Relief Alliance</li> <li>▪ Dawn Ownes (AL) – VOICES for Alabama’s Children</li> <li>▪ Erin O’Malley (TX) – Every Texan</li> <li>▪ Esther McCant (FL) – Metro Mommy Agency</li> <li>▪ Hailey Gibbs (NP) – Center for American Progress</li> <li>▪ Jennifer Harris (AL) – Alabama Arise</li> <li>▪ Kameron Dawson (NP) – A Better Balance</li> <li>▪ Keith Richard (FL) – Florida Chamber of Commerce</li> <li>▪ Nighisti Dawit (NP) – Center on Developing Child at Harvard University</li> <li>▪ Paige Falion (NP) – AMCHP</li> <li>▪ Paige Ferguson (NP) – Future Caucus</li> <li>▪ Peter Gess (AR) Arkansas Advocates for Children and Families</li> <li>▪ Ruth Ann Moss (AL) – Small Magic</li> <li>▪ Tania Villarroel (NP) – Unidos US</li> <li>▪ Tiwani Oseni (NP) – HealthConnect One</li> <li>▪ Varnessa McCray (FL) – The Children’s Movement</li> </ul>

## Policy Research & Data Collection

Give/Get	Details	Organization	Contact Name	Would like to connect:
Give – NP	Access to resources (mainly studies) that dissect and explain the importance of community-based birth workers. Explains the significant impact they have on babies, families, birth givers and communities	HealthConnect One	<a href="#">Tiwani Oseni</a>	<ul style="list-style-type: none"> <li>▪ Cathy May (AR) – Arkansas Hunger Relief Alliance</li> <li>▪ Esther McCant (FL) – Metro Mommy Agency</li> <li>▪ Jessica Garland (NP) – State Innovation Exchange (SiX)</li> <li>▪ Tiwani Oseni (NP) – HealthConnect One</li> </ul>
Give – NP	Community led research and community led research training	Impact Stats Inc.	<a href="#">Melodie Baker</a>	<ul style="list-style-type: none"> <li>▪ Suzanne Wikle (NP) – CLASP</li> <li>▪ Ashley Houk (FL) – Help Me Grow Florida</li> <li>▪ Hailey Gibbs (NP) – Center for American Progress</li> <li>▪ Kameron Dawson (NP) – A Better Balance</li> <li>▪ Paige Falion (NP) – AMCHP</li> <li>▪ Paige Ferguson (NP) – Future Caucus</li> <li>▪ Peter Gess (AR) – Arkansas Advocates for Children and Families</li> <li>▪ Tiffany McCaskill Henderson (FL) – American Heart Association</li> </ul>
Give – NP	Policy analysis, research, community-based organizations connections focused on the Latino community	Unidos US	<a href="#">Tania Villarroel</a>	<ul style="list-style-type: none"> <li>▪ Paige Ferguson (NP) – Future Caucus</li> </ul>
Give – NP	Childcare and workforce messaging and data for MS	MELA (MS Early Learning)	<a href="#">Biz Harris</a>	
Give – NP	Technical assistance to advocacy groups on implementation in their states. For example, helping advocates understand if states are following federal regulations, where states can streamline or simplify access to public benefits, and what red tape in tier states can	Center for Law and Social Policy	<a href="#">Suzanne Wikle</a>	<ul style="list-style-type: none"> <li>▪ Ashley Houk (FL) – Help Me Grow Florida</li> <li>▪ Dawn Owens (AL) – VOICES for Alabama’s Children</li> <li>▪ Jennifer Harris (AL) – Alabama Arise</li> <li>▪ Varnessa McCray (FL) – The Children’s Movement of Florida</li> </ul>

## Policy Research & Data Collection

Give/Get	Details	Organization	Contact Name	Would like to connect:
	be eliminated.			
Give – NP	<ul style="list-style-type: none"> <li>▪ Curation of materials about the science of early childhood development (e.g. extreme heat, and water quality and access)</li> <li>▪ Collaborative learning engagements (e.g. science communication trainings and workshops)</li> </ul>	Center on the Developing Child at Harvard	<a href="#">Nighisti Dawit</a>	<ul style="list-style-type: none"> <li>▪ Hailey Gibbs (NP) – Center for American Progress</li> <li>▪ Tiffany McCaskill Henderson (FL) – American Heart Association</li> </ul>
Get – AL	An analysis of all the federal dollars rolling in to the state, to what agencies and if there is a match. We could utilize matches as a tip to get state funding	American Heart Association	<a href="#">Jada Shaffer</a>	<ul style="list-style-type: none"> <li>▪ Ashley Houk (FL) – Help Me Grow Florida</li> <li>▪ Varnessa McCray (FL) – The Children’s Movement of Florida</li> </ul>
Get – NP	Our young lawmakers are thirsty for information, lived experiences and data to interim their policy making	Future Caucus	<a href="#">Paige Ferguson</a>	<ul style="list-style-type: none"> <li>▪ Ashley Houk (FL) – Help Me Grow Florida</li> <li>▪ Dawn Owens (AL) – VOICES for Alabama’s Children</li> <li>▪ Erin O’Malley (TX) – Every Texan</li> <li>▪ Hailey Gibbs (NP) – Center for American Progress</li> <li>▪ Paige Falion (NP) – AMCHP</li> <li>▪ Ruth Ann Moss (AL) – Small Magic</li> <li>▪ Suzanne Wikle (NP) – CLASP</li> <li>▪ Tania Villarroel (NP) – Unidos US</li> <li>▪ Tiffany McCaskill Henderson (FL) – American Heart Association</li> </ul>
Get – NP	<ul style="list-style-type: none"> <li>▪ Collaboration with other state partners who are interested in advancing policy like PFML, paid sick time, etc. with a racial justice lens and research</li> </ul>	A Better Balance	<a href="#">Kameron Dawson</a>	<ul style="list-style-type: none"> <li>▪ Ashley Houk (FL) – Help Me Grow Florida</li> <li>▪ Dawn Owens (AL) – VOICES for Alabama’s Children</li> <li>▪ Ian Pfeiffer (NP) – State Innovation Exchange</li> </ul>

## Policy Research & Data Collection

Give/Get	Details	Organization	Contact Name	Would like to connect:
	disaggregated by county or state (MCH data)			(SiX) <ul style="list-style-type: none"> <li>▪ Paige Falion (NP) – AMCHP</li> <li>▪ Peter Gess (AR) – Arkansas Advocates for Children and Families</li> <li>▪ Tiwani Oseni (NP) – HealthConnect One</li> </ul>

## Decision Maker Advocacy

Give/Get	Details	Organization	Contact Name	Would like to connect:
Give – AL	<ul style="list-style-type: none"> <li>▪ How we built coalition to pass law for Child Care Tax Credits</li> </ul>	Women’s Foundation of Alabama	<a href="#">Zhaundra Jones</a>	
Give – TX	<ul style="list-style-type: none"> <li>▪ Lessons learned from the passage of 12 months postpartum health coverage</li> <li>▪ Advocacy expertise on early intervention</li> <li>▪ Experience leading communications campaigns for policy change</li> </ul>	Texas Care for Children	<a href="#">Stephanie Rubin</a>	<ul style="list-style-type: none"> <li>▪ Esther McCant (FL) – Metro Mommy Agency</li> <li>▪ Hailey Gibbs (NP) – Center for American Progress</li> <li>▪ Jessica Garland (NP) – State Innovation Exchange (SiX)</li> <li>▪ Keith Richard (FL) – Florida Chamber of Commerce</li> <li>▪ Peter Gess (AR) – Arkansas Advocates for Children and Families</li> <li>▪ Stephanie Rubin (TX) – Texas Care for Children</li> <li>▪ Tania Villarroel (NP) – Unidos US</li> </ul>
Give – NP	<ul style="list-style-type: none"> <li>▪ Partnerships with federal offices to lift state successes, on the ground stories, any asks of national leaders to help meet the need/advance action happening at</li> </ul>	Center for American Progress	<a href="#">Hailey Gibbs</a>	<ul style="list-style-type: none"> <li>▪ Dawn Owens (AL) – VOICES for Alabama’s Children</li> <li>▪ Erin O’Malley (TX) – Every Texan</li> <li>▪ Esther McCant (FL) – Metro Mommy Agency</li> </ul>



## Decision Maker Advocacy

Give/Get	Details	Organization	Contact Name	Would like to connect:
	the state and local level			<ul style="list-style-type: none"> <li>▪ Jessica Garland (NP) – State Innovation Exchange (SiX)</li> <li>▪ Karina Burciaga (NP) – Abriendo Puertas/Opening Doors</li> <li>▪ Nancy Fishman (NP) ReadyNation</li> <li>▪ Paige Falion (NP) – AMCHP</li> <li>▪ Paige Ferguson (NP) – Future Caucus</li> <li>▪ Tania Villarroel (NP) – Unidos US</li> <li>▪ Tiffany McCaskill Henderson (FL) – American Heart Association</li> </ul>
Give – NP	Thought partner on everything campaign planning and passing public policy #powerprismal	Voices For Healthy Kids	<a href="#">Ben Schmauss</a>	<ul style="list-style-type: none"> <li>▪ Jennifer Harris (AL) – Alabama Arise</li> </ul>
Give – NP	Shared learnings on business engagement to move policy	ReadyNation	<a href="#">Nancy Fishman</a>	<ul style="list-style-type: none"> <li>▪ Erin O’Malley (TX) – Every Texan</li> <li>▪ Hailey Gibbs (NP) – Center for American Progress</li> <li>▪ Jessica Garland (NP) – State Innovation Exchange (SiX)</li> <li>▪ Ruth Ann Moss (AL) – Small Magic</li> </ul>
Give – NP	<ul style="list-style-type: none"> <li>▪ Help with nutrition security campaigns</li> <li>▪ Training on Power Prism tools</li> <li>▪ Support on preemption campaigns</li> </ul>	Voices/NCIT	<a href="#">Katie Bishop Kendrick</a>	
Give – NP	<ul style="list-style-type: none"> <li>▪ Community led research support</li> <li>▪ Community led research training</li> <li>▪ Evaluation and data analysis</li> </ul>	ImpactSTATS Inc.	<a href="#">Melodie Baker</a>	<ul style="list-style-type: none"> <li>▪ Ashley Houk (FL) – Help Me Grow Florida</li> <li>▪ Erin O’Malley (TX) – Every Texan</li> <li>▪ Hailey Gibbs (NP) – Center for American Progress</li> <li>▪ Zhaundra Jones (AL) – Women’s Foundation of Alabama</li> </ul>

## Decision Maker Advocacy

Give/Get	Details	Organization	Contact Name	Would like to connect:
Give – NP	Connections to a network of over 1000 young lawmakers under 45+, particularly at the state-level. I have a fellowship of lawmakers dedicated to maternal health and early childhood wellness who would like to hear from you!	Future Caucus	<a href="#">Paige Ferguson</a>	<ul style="list-style-type: none"> <li>▪ Ashley Houk (FL) – Help Me Grow Florida</li> <li>▪ Erin O’Malley (TX) – Every Texan</li> <li>▪ Esther McCant (FL) – Metro Mommy Agency</li> <li>▪ Hailey Gibbs (NP) – Center for American Progress</li> <li>▪ Jamie Olson (TX) – Feeding Texas</li> <li>▪ Kameron Dawson (NP) – A Better Balance</li> <li>▪ Nancy Fishman (NP) ReadyNation</li> <li>▪ Tiffany McCaskill Henderson (FL) – American Heart Association</li> <li>▪ Tiwani Oseni (NP) – HealthConnect One</li> </ul>
Give – NP	I would love to connect all state partners with their state maternal and child health programs (primarily in public health) directors so that you can lift up your amazing programs and strategies to potentially be replicated and spread throughout the state	Association of Maternal & Child Health Programs (AMCHP)	<a href="#">Paige Falion</a>	<ul style="list-style-type: none"> <li>▪ Dawn Owens (AL) – VOICES for Alabama’s Children</li> <li>▪ Erin O’Malley (TX) – Every Texan</li> <li>▪ Esther McCant (FL) – Metro Mommy Agency</li> <li>▪ Paige Ferguson (NP) – Future Caucus</li> <li>▪ Tiffany McCaskill Henderson (FL) – American Heart Association</li> <li>▪ Tonya Ware (MS) – ReadyNation</li> </ul>
Give – NP	Access to 3,000+ state legislators around the country as well as our staff working on gender justice, economic justice, racial justice, worker power, paid family and medical leave and more!	State Innovation Exchange (SiX)	<a href="#">Jessica Garland</a> & <a href="#">Ian Pfeiffer</a>	<ul style="list-style-type: none"> <li>▪ Ashley Houk (FL) – Help Me Grow Florida</li> <li>▪ Dawn Owens (AL) – VOICES for Alabama’s Children</li> <li>▪ Erin O’Malley (TX) – Every Texan</li> <li>▪ Hailey Gibbs (NP) – Center for American Progress</li> <li>▪ Jamie Olson (TX) – Feeding Texas</li> <li>▪ Kelly Crane (NP) – Prevent Child Abuse America</li> <li>▪ Varnessa McCray (FL) – The Children’s Movement of Florida</li> </ul>

## Decision Maker Advocacy

Give/Get	Details	Organization	Contact Name	Would like to connect:
Give – NP	Connections to established Future Caucuses in Arkansas, Alabama, Mississippi and Florida (Not Texas yet!)	Future Caucus	<a href="#">Paige Ferguson</a>	<ul style="list-style-type: none"> <li>▪ Ashley Houk (FL) – Help Me Grow Florida</li> <li>▪ Hailey Gibbs (NP) – Center for American Progress</li> <li>▪ Varnessa McCray (FL) – The Children’s Movement of Florida</li> </ul>
Give – NP	<ul style="list-style-type: none"> <li>▪ Tools for legislators and staff to consider policy development on policy such as paid leave, childcare, tax credits, etc.</li> <li>▪ Expertise communicating complex research to bipartisan groups</li> </ul>	PN-3 Policy Impact Center	<a href="#">Cynthia Osborne</a>	<ul style="list-style-type: none"> <li>▪ Hailey Gibbs (NP) – Center for American Progress</li> <li>▪ Ian Pfeiffer (NP) – State Innovation Exchange (SiX)</li> <li>▪ Jessica Garland (NP) – State Innovation Exchange (SiX)</li> <li>▪ Kameron Dawson (NP) – A Better Balance</li> <li>▪ Nancy Fishman (NP) ReadyNation</li> <li>▪ Varnessa McCray (FL) – The Children’s Movement of Florida</li> </ul>
Get – AR	More information on maternal presumptive eligibility – campaign information; policy language	American Heart Association	<a href="#">Dave Oberembt</a>	<ul style="list-style-type: none"> <li>▪ Suzanne Wikle (NP) – CLASP</li> </ul>
Get – MS	<ul style="list-style-type: none"> <li>▪ A legislative bootcamp for new legislators aimed at creating new P-3 champions</li> <li>▪ Lobby day or connections to college Dems and college Repub. Organizations to create champions <u>before</u> they become legislators</li> </ul>	AR Hunger Relief Alliance / Texans Care for Children / MS Black Women’s Roundtable / AHA – South Florida	<a href="#">Robin Jackson</a> (with agreement and support from org reps)	<ul style="list-style-type: none"> <li>▪ Cynthia Osborne (NP) – Prenatal to 3 Policy Impact Center</li> <li>▪ Emily Workman (NP) – Prenatal to 3 Policy Impact Center</li> </ul>
Get – TX	Legislative one-pagers on major P-3 for example: templates to insert local/state data; “what have other Red States legislated			<ul style="list-style-type: none"> <li>▪ Lori Fresina (NP) – NCIT/Voices</li> </ul>

## Decision Maker Advocacy

Give/Get	Details	Organization	Contact Name	Would like to connect:
	on X" e.g. doulas, state funds for childcare, PN3 issues			
Get – Various	How to move information and make it useful in conversation with business partners so that they can leverage their power in the community to advance local-level policy and appropriations. Economic justice	AR Hunger Relief Alliance / Texans Care for Children / MS Black Women’s Roundtable / AHA – South Florida	<a href="#">Robert Hill</a> with shared interest from others at the table	

## Media Advocacy

Give/Get	Details	Organization	Contact Name	Would like to connect:
Give – AL	Communications specialist – reach out for support!	Voices for Healthy Kids	<a href="#">Joshua Harris</a>	<ul style="list-style-type: none"> <li>Hailey Gibbs (NP) – Center for American Progress</li> </ul>
Give – FL	How to leverage visibility and collab marketing strategies to move the money faster to CBOs/Grassroots organizations and tell impact stories effectively	Metro Mommy Agency	<a href="#">Esther McCant</a>	<ul style="list-style-type: none"> <li>Alec Puente (TX) – American Heart Association</li> <li>Zhaundra Jones (AL) – Women’s Foundation of Alabama</li> </ul>
Give – FL	We have a lot of Florida based policy research and experts on earned media and support partners re: policy campaigns, especially healthcare, education, safety net, etc.	Florida Policy Institute	<a href="#">Holly Bullard</a>	
Give – MS	Media advocacy and connecting with press	NCIT	<a href="#">Laura Coleman</a>	<ul style="list-style-type: none"> <li>Alex Chandler (TX) – AVANCE Inc.</li> </ul>
Give – MS	News media contacts so that organizations can begin to build relationships with local	NCIT/Voices	<a href="#">Laura Coleman</a>	<ul style="list-style-type: none"> <li>Adrianna Cuéllar Rojas (TX) – TexProtects</li> <li>Alex Chandler (TX) – AVANCE Inc.</li> </ul>

## Media Advocacy

Give/Get	Details	Organization	Contact Name	Would like to connect:
	media			<ul style="list-style-type: none"> <li>▪ Tiffany McCaskill Henderson (FL) – American Heart Association</li> <li>▪ Tonya Ware (MS) – ReadyNation Mississippi</li> </ul>
Give – MS	Media advocacy training – FREE Training is so important and I do not provide “traditional training”, I provide practical training in ways that we all understand and can pass along to peers	NCIT/Voices	<a href="#">Laura Coleman</a>	<ul style="list-style-type: none"> <li>▪ Adrianna Cuéllar Rojas (TX) – TexProtects</li> <li>▪ Biz Harrs (MS) – Mississippi Early Learning Alliance</li> <li>▪ Dawn Owens (AL) – VOICES for Alabama’s Children</li> <li>▪ Hailey Gibbs (NP) – Center for American Progress</li> <li>▪ Jennifer Harris (AL) – Alabama Arise</li> <li>▪ Ruth Ann Moss (AL) – Small Magic</li> </ul>
Give – NP	Media advocacy direct consultation	NCIT/Voices	<a href="#">Allyson Frazier</a>	<ul style="list-style-type: none"> <li>▪ Adrianna Cuéllar Rojas (TX) – TexProtects</li> <li>▪ Biz Harris (MS) – Mississippi Early Learning Alliance</li> <li>▪ Jennifer Harris (AL) – Alabama Arise</li> </ul>
Give – NP	Social media help! Planning, implementation, consultation!	NCIT	<a href="#">Lori Poag</a>	<ul style="list-style-type: none"> <li>▪ Paige Ferguson (NP) – Feeding America</li> </ul>
Give – NP	Communications strategy workshop/webinars, 1:1 technical assistance, op ed brainstorming and pitching support, online and IRL advocacy trainings, and more!	National Women’s Law Center	<a href="#">Hannah Oppermann</a>	<ul style="list-style-type: none"> <li>▪ Biz Harris (MS) – Mississippi Early Learning Alliance</li> <li>▪ Hailey Gibbs (NP) – Center for American Progress</li> <li>▪ Jennifer Harris (AL) – Alabama Arise</li> <li>▪ Ruth Ann Moss (AL) – Small Magic</li> <li>▪ Zhaundra Jones (AL) – Women’s Foundation of Alabama</li> </ul>
Get – MS	Media help/messaging	Magnolia Medical Foundation	<a href="#">Erica Thompson</a>	

## Grass Roots and Key Contacts

Give/Get	Details	Organization	Contact Name	Would like to connect:
Give – MS	Connecting partners and supporters in Alabama; connecting with grassroots movements	Alabama Arise	<a href="#">Jennifer Harris</a>	<ul style="list-style-type: none"> <li>Hannah Oppermann (NP) – National Women’s Law Center</li> </ul>
Give – TX	Connection to a statewide network of 240+ community-based parent/caregiver supporting organizations	Tex Protects	<a href="#">Adrianna Cuéllar Rojas</a>	<ul style="list-style-type: none"> <li>Alec Puente (TX) – American Heart Association</li> <li>Alex Chandler (TX) – AVANCE Inc.</li> <li>Esther McCant (FL) – Metro Mommy Agency</li> <li>Haily Gibbs (NP) – Center for American Progress</li> <li>Jamie Olson (TX) – Feeding Texas</li> <li>Jessica Garland (NP) – State Innovation Exchange (SiX)</li> <li>Kameron Dawson (NP) – A Better Balance</li> <li>Karina Burciaga (NP) – Abriendo Puertas/Opening Doors</li> <li>Morgan Reiss (NP) – Help Me Grow National Center</li> <li>Tiffany McCaskill Henderson (FL) – American Heart Association</li> <li>Tiwani Oseni (NP) – Health Connection</li> <li>Zhaundra Jones (AL) – Women’s Foundation of Alabama</li> </ul>
Give – TX	Network of 20 food banks that reach all 254 Texas counties with food resources and SNAP/Medicaid application assistance (plus Texas food policy roundtable – anti-hunger coalition with 70+ orgs)	Feeding Texas	<a href="#">Jamie Olson</a>	
Give – NP	Parent Leadership Programs - stipends included. Civics Trainings. Parent Organizing	Moms Rising	<a href="#">Nina Perez</a>	<ul style="list-style-type: none"> <li>Alex Chandler (TX) – AVANCE Inc.</li> <li>Dawn Owens (AL) – VOICES for Alabama’s</li> </ul>

## Grass Roots and Key Contacts

Give/Get	Details	Organization	Contact Name	Would like to connect:
	Models			<p>Children</p> <ul style="list-style-type: none"> <li>▪ Esther McCant (FL) – Metro Mommy Agency</li> <li>▪ Haily Gibbs (NP) – Center for American Progress</li> <li>▪ Ian Pfeiffer (NP) – State Innovation Exchange (SiX)</li> <li>▪ Jamie Ward (AR) – Excel by 8</li> <li>▪ Jennifer Harris (AL) – Alabama Arise</li> <li>▪ Zhaundra Jones (AL) – Women’s Foundation of Alabama</li> <li>▪ Varnessa McCray (FL) – The Children’s Movement</li> </ul>
Give – NP	Access to our Policy Action Center - resource on our website to be an advocate for timely policies that support families on the federal level through email or phone outreach	Prevent Child Abuse America	<a href="#">Kelly Crane</a>	<ul style="list-style-type: none"> <li>▪ Ashley Houk (FL) – Help Me Grow Florida</li> <li>▪ Paige Ferguson (NP) – Future Caucus</li> <li>▪ Tiffany McCaskill Henderson (FL) – American Heart Association</li> <li>▪ Tiwani Oseni (NP) – Health Connection</li> </ul>
Give – NP	Miss America contestants as PN-3 spokespersons with media and lawmakers	Voices – AHA	<a href="#">Lori Fresina</a>	<ul style="list-style-type: none"> <li>▪ Adrianna Cuéllar Rojas (TX) – TexProtects</li> <li>▪ Ashley Houk (FL) – Help Me Grow Florida</li> <li>▪ Biz Harris (MS) – Mississippi Early Learning Alliance</li> <li>▪ Kelly Crane (NP) – Prevent Child Abuse America</li> <li>▪ Tiffany McCaskill Henderson (FL) – American Heart Association</li> </ul>
Get – FL	What states have advocacy training programs and what do they look like?	Help Me Grow Florida	<a href="#">Ashley Houk</a>	<ul style="list-style-type: none"> <li>▪ Ian Pfeiffer (NP) – State Innovation Exchange (SiX)</li> <li>▪ Varnessa McCray (FL) – The Children’s Movement</li> </ul>

## Grass Roots and Key Contacts

Give/Get	Details	Organization	Contact Name	Would like to connect:
				<ul style="list-style-type: none"> <li>Zhaundra Jones (AL) – Women’s Foundation of Alabama</li> </ul>
Get – TX	Connections in Texas that will help us identify policy opportunities we could support to advance equity for Latino infants and toddlers and their families	Unidos US	<a href="#">Tania Villarroel</a>	<ul style="list-style-type: none"> <li>Alex Chandler (TX) – AVANCE Inc.</li> <li>Erin O’Malley (TX) – Every Texan</li> <li>Jamie Olson (TX) – Feeding Texas</li> <li>Paige Falion (NP) – AMCHP</li> </ul>
Get – NP	Access to online advocacy network for action alerts and recruitment	NCIT	<a href="#">Maura Devine</a>	<ul style="list-style-type: none"> <li>Hannah Oppermann (NP) – National Women’s Law Center</li> </ul>

## Fundraising & Development

Give/Get	Details	Organization	Contact Name	Would like to connect:
Give – AL	I love talking with other orgs about strategy and positioning for fundraising!	Small Magic	<a href="#">Ruth Ann Moss</a>	<ul style="list-style-type: none"> <li>Alex Chandler (TX) – AVANCE Inc.</li> <li>Biz Harris (MS) – Mississippi Early Learning Alliance</li> <li>Dawn Owens (AL) – VOICES for Alabama’s Children</li> <li>Esther McCant (FL) – Metro Mommy Agency</li> <li>Keith Richard (FL) – Florida Chamber of Commerce</li> </ul>
Give – FL	Many areas of Florida are eligible to complete the return on investment calculator, which shows the financial impact of early childhood system building investments across many sectors of impact (e.g. special education, Medicaid, etc.). These calculators show region specific	Help Me Grow National Center	<a href="#">Morgan Reiss</a>	<ul style="list-style-type: none"> <li>Cathy May (AR) – Arkansas Hunger Relief Alliance</li> <li>Esther McCant (FL) – Metro Mommy Agency</li> <li>Paige Ferguson (NP) – Future Caucus</li> <li>Tiffany McCaskill Henderson (FL) – American Heart Association</li> <li>Varnessa McCray (FL) – The Children’s</li> </ul>



## Fundraising & Development

Give/Get	Details	Organization	Contact Name	Would like to connect:
	impacts, can be used to secure additional funding and policy change			Movement
Get – MS	Fundraising & development	Magnolia Medical Foundation	<a href="#">Erica Thompson</a>	
Get – TX	Funding is ending for the state's <u>only</u> longitudinal data hub/resource report about the state of Texas' children. We need connection to new funding to maintain this work	Every Texan	<a href="#">Erin O'Malley</a>	<ul style="list-style-type: none"> <li>Alex Chandler (TX) – AVANCE Inc.</li> </ul>
Get – Various	<ul style="list-style-type: none"> <li>501C4 development local and nationwide</li> <li>\$ for voter engagement and registrations</li> <li>\$ to reform address voter suppression laws</li> <li>Electoral reform</li> <li>Candidate cultivation</li> <li>\$ to get folks elected on school boards. This is the pipeline for future office. Moms4Liberty is doing this and there is no alternative organization organized to do the same</li> </ul>	Cross Table Discussion	<a href="#">Jamie Olson</a> <a href="#">Morgan Reiss</a> <a href="#">Erica Phung</a> <a href="#">Mandi Kimball</a> <a href="#">Carol Burnett</a> <a href="#">Nancy Fishman</a> <a href="#">Peter Gess</a>	<ul style="list-style-type: none"> <li>Dawn Owens (AL) – VOICES for Alabama's Children</li> <li>Lori Fresina (NP) – NCIT/Voices</li> </ul>

## Coalition Building & Maintenance

Give/Get	Details	Organization	Contact Name	Would like to connect about this:
Give – AL	Alabama policy analysis; campaign and coalition building support; advocacy training	Alabama Arise	<a href="#">Jennifer Harris</a>	

## Coalition Building & Maintenance

Give/Get	Details	Organization	Contact Name	Would like to connect about this:
Give – AR	Statewide org- Six Feeding America foodbanks 600 agencies to share policy, updates, outreach for snap & WIC	Arkansas Hunger Relief Alliance	<a href="#">Cathy May</a>	<ul style="list-style-type: none"> <li>Ashley Houk (FL) – Help Me Grow Florida</li> <li>Esther McCant (FL) – Metro Mommy Agency</li> <li>Jennifer Harris (AL) – Alabama Arise</li> <li>Paige Ferguson (NP) – Feeding America</li> <li>Tiffany McCaskill Henderson (FL) – American Heart Association</li> </ul>
Give – MS	Name credibility; resources/infrastructure – campaign support, strategy, coalition building, subject experts; funding, data/science	American Heart Association	<a href="#">Laken Camp</a>	<ul style="list-style-type: none"> <li>Biz Harris (MS) – Mississippi Early Learning Alliance</li> <li>Hailey Gibbs (NP) – Center for American Progress</li> </ul>
Give – MS	For Mississippi: we have a collectively designed Early Care Advocacy agenda; we are developing (using collective impact) a shaped P-4 agenda for infant/toddler health and strong families; we love to have folks input!	Mississippi Early Learning Alliance	<a href="#">Biz Harris</a>	
Get – AL	Funding for a PN-3 coalition building and staff to manage. The coalition would identify a policy agenda and <u>actively move policy</u>	American Heart Association	<a href="#">Jada Shaffer</a>	<ul style="list-style-type: none"> <li>Alex Chandler (TX) – AVANCE Inc.</li> </ul>
Get – AL	Successful org structures and models for organizing community and train-the-trainer models	Women’s Foundation of Alabama	<a href="#">Zhaundra Jones</a>	<ul style="list-style-type: none"> <li>Alex Chandler (TX) – AVANCE Inc.</li> </ul>
Get – AL	More info on the Rapid Response Team. Who funds it, how decisions are made, What core values	American Heart Association	<a href="#">Jada Shaffer</a>	<ul style="list-style-type: none"> <li>Esther McCant (FL) – Metro Mommy Agency</li> <li>Jamie Olson (TX) – Feeding Texas</li> <li>Tiffany McCaskill Henderson (FL) – American Heart Association</li> </ul>
Get – FL	<ul style="list-style-type: none"> <li>Funds to train and certify more black</li> </ul>	Southern Birth	<a href="#">Jamarah Amani</a>	

## Coalition Building & Maintenance

Give/Get	Details	Organization	Contact Name	Would like to connect about this:
	<p>and brown midwives and doulas and funds that go directly to eliminating barriers to participation. And funds for continuing education, networking.</p> <ul style="list-style-type: none"> <li>▪ Barriers: childcare costs, transportation costs, interpreters/materials in targeted language groups</li> <li>▪ Also help to pass a <u>community-based</u> doula-informed Doula bill in FL</li> <li>▪ Hiring a lobbyist – increase service fee for Medicaid service providers</li> </ul>	Justice Network		
Get – FL	NCIT continues providing opportunities for 5 states to convene virtually and provide another in-person convening 6-12 months from now. Also encourage each state represented to meet with partners that are present to share policy, priorities and collaborate on state policies	American Heart Association	<a href="#">Tiffany McCaskill Henderson</a>	<ul style="list-style-type: none"> <li>▪ Adrianna Cuéllar Rojas (TX) – TexProtects</li> <li>▪ Alec Puente (TX) – American Heart Association</li> <li>▪ Ashley Houk (FL) – Help Me Grow Florida</li> <li>▪ Dawn Owens (AL) – VOICES for Alabama’s Children</li> <li>▪ Nighisti Dawit (NP) – Center on the Developing Child at Harvard University</li> <li>▪ Jennifer Harris (AL) – Alabama Arise</li> <li>▪ Varnessa McCray (FL) – The Children’s Movement</li> </ul>
Get – MS	Ideas for your favorite CRM and communication systems for coalitions	Mississippi Early Learning Alliance	<a href="#">Biz Harris</a>	<ul style="list-style-type: none"> <li>▪ Dawn Owens (AL) – VOICES for Alabama’s Children</li> <li>▪ Jessica Garland (NP) – State Innovation Exchange (SiX)</li> <li>▪ Ruth Ann Moss (AL) – Small Magic</li> </ul>
Get – TX	Coalition-building and maintenance, focused on the issue broadly and not specific policies	American Heart Association	<a href="#">Alec Puente</a>	<ul style="list-style-type: none"> <li>▪ Erin O’Malley (TX) – Every Texan</li> <li>▪ Hannah Oppermaann (NP) – National Women’s</li> </ul>

## Coalition Building & Maintenance

Give/Get	Details	Organization	Contact Name	Would like to connect about this:
	or demographics			Law Center <ul style="list-style-type: none"> <li>▪ Tiffany McCaskill Henderson (FL) – American Heart Association</li> </ul>
Get – NP	Learn more about business engagement in your state	ReadyNation	<a href="#">Nancy Fishman</a>	<ul style="list-style-type: none"> <li>▪ Dawn Owens (AL) – VOICES for Alabama’s Children</li> <li>▪ Ruth Ann Moss (AL) – Small Magic</li> <li>▪ Zhaundra Jones (AL) – Women’s Foundation of Alabama</li> </ul>
Get – NP	State advocates focused on childcare/early learning (especially in AR & FL, but all states welcome!) We’d love to invite you to our annual advocates’ convening and connect with you about your work	National Women’s Law Center	<a href="#">Hannah Oppermann</a>	<ul style="list-style-type: none"> <li>▪ Ashley Houk (FL) – Help Me Grow Florida</li> <li>▪ Dawn Owens (AL) – VOICES for Alabama’s Children</li> <li>▪ Jennifer Harris (AL) – Alabama Arise</li> <li>▪ Nighisti Dawit (NP) – Center on the Developing Child at Harvard University</li> <li>▪ Tiffany McCaskill Henderson (FL) – American Heart Association</li> <li>▪ Varnessa McCray (FL) – The Children’s Movement</li> <li>▪ Zhaundra Jones (AL) – Women’s Foundation of Alabama</li> </ul>

## Health Equity & Racial Justice

Give/Get	Details	Organization	Contact Name	Would like to connect:
Give – TX	Training/TA/brainstorming around integrating health equity into your work	Voices for Healthy Kids	<a href="#">Raquel Bueno-Morales</a>	<ul style="list-style-type: none"> <li>▪ Jennifer Harris (AL) – Alabama Arise</li> <li>▪ Zhaundra Jones (AL) – Women’s Foundation of Alabama</li> </ul>

## Health Equity & Racial Justice

Give/Get	Details	Organization	Contact Name	Would like to connect:
Give – NP	Historical timelining of Paid Leave, childcare, and Medicaid to understand structural racism in today’s policies	PN-3 Policy Impact Center	<a href="#">Cynthia Osborne</a>	<ul style="list-style-type: none"> <li>▪ Ashley Houk (FL) – Help Me Grow Florida</li> <li>▪ Dawn Owens (AL) – VOICES for Alabama’s Children</li> <li>▪ Haily Gibbs (NP) – Center for American Progress</li> <li>▪ Ian Pfeiffer (NP) – State Innovation Exchange (SiX)</li> <li>▪ Jennifer Harris (AL) – Alabama Arise</li> <li>▪ Jessica Garland (NP) – State Innovation Exchange (SiX)</li> <li>▪ Kelly Crane (NP) – Prevent Child Abuse America</li> <li>▪ Tania Villarroel (NP) – Unidos US</li> <li>▪ Tiffany McCaskill Henderson (FL) – American Heart Association</li> <li>▪ Nighisti Dawit (NP) – Center on the Developing Child at Harvard University</li> </ul>
Get – NP	Reproductive justice, birth justice, health equity and racial justice training for all NCIT partners (state and national)	Metro Mommy Agency	<a href="#">Esther McCant</a>	<ul style="list-style-type: none"> <li>▪ Erin O’Malley (TX) – Every Texan</li> <li>▪ Jennifer Harris (AL) – Alabama Arise</li> </ul>

## Other

Give/Get	Details	Organization	Contact Name	Would like to connect:
Give – NP	A “plug and play” for a primary prevention ecosystem – something that doesn’t yet exist. We have created a new vision for the creation of a primary prevention ecosystem	Prevent Child Abuse America	<a href="#">Kelly Crane</a>	<ul style="list-style-type: none"> <li>▪ Ashley Houk (FL) – Help Me Grow Florida</li> <li>▪ Esther McCant (FL) – Metro Mommy Agency</li> <li>▪ Kameron Dawson (NP) – A Better Balance</li> <li>▪ Nighisti Dawit (NP) – Center on the Developing</li> </ul>

Other				
Give/Get	Details	Organization	Contact Name	Would like to connect:
	that builds the wellbeing of children and families and have a toolkit/plug and play for all to use			Child at Harvard University <ul style="list-style-type: none"> <li>Paige Falion (NP) – AMCHP</li> <li>Paige Ferguson (NP) – Future Caucus</li> </ul>
Give – NP	Resources and information about how to get involved in the <u>2025 tax fight</u> and why the expiration of the Tax Cuts and Jobs Act matters for care advocates	National Women’s Law Center	<a href="#">Hannah Oppermann</a>	<ul style="list-style-type: none"> <li>Erin O’Malley (TX) – Every Texan</li> <li>Jamie Olson (TX) – Feeding Texas</li> <li>Jennifer Harris (AL) – Alabama Arise</li> <li>Jessica Garland (NP) – State Innovation Exchange (SiX)</li> <li>Kelly Crane (NP) – Prevent Child Abuse America</li> <li>Peter Gess (AR) – Arkansas Advocates for Children and Families</li> <li>Ruth Ann Moss (AL) – Small Magic</li> <li>Tania Villarroel (NP) – Unidos US</li> <li>Tiffany McCaskill Henderson (FL) – American Heart Association</li> <li>Tiwani Oseni (NP) – HealthConnect One</li> </ul>
Give – NP	Examples of websites and processes to house and disseminate resources to states in early childhood, establishing backbone leadership teams in coalitions to be point in coordination and what’s needed to do so	Help Me Grow National Center	<a href="#">Morgan Reiss</a>	
Give – NP	Discussions and TA focused on planning and hosting Capitol Hill events focused on families and highlighting their voices.	Zero to Three	<a href="#">Jared Busker</a>	<ul style="list-style-type: none"> <li>Jennifer Harris (AL) – Alabama Arise</li> <li>Dawn Owens (AL) – VOICES for Alabama’s Children</li> </ul>
Get – AR	Maternal – PN3 system of care – rural access; micro investment rural providers?	American Heart Association	<a href="#">Dave Oberembt</a>	<ul style="list-style-type: none"> <li>Lori Fresina (NP) – NCIT/Voices</li> </ul>

Other				
Give/Get	Details	Organization	Contact Name	Would like to connect:
Get – FL	Nancy Fishman to please follow-up with Florida Chamber on business leader connections, including their view on and implementation of childcare services and/or childcare tax credits	Florida Chamber of Commerce	<a href="#">Keith Richard</a>	
Get – FL	More info on Alabama’s incentive Quality Rating and Improvement System (process)	The Children’s Movement of Florida	<a href="#">Varnessa McCray</a>	<ul style="list-style-type: none"> <li>▪ Ashley Houk (FL) – Help Me Grow Florida</li> </ul>
Get – FL	Parent policy, leadership and advocacy training resources, support, models, etc.	The Children’s Movement of Florida	<a href="#">Varnessa McCray</a>	<ul style="list-style-type: none"> <li>▪ Ashley Houk (FL) – Help Me Grow Florida</li> <li>▪ Jennifer Harris (AL) – Alabama Arise</li> <li>▪ Paige Falion (NP) – AMCHP</li> </ul>
Get – FL	Hannah Oppermann to please send resources related to other states – businesses implementing childcare support, starting their own childcare center, effectively navigating state’s childcare tax credits in an equitable way.	Florida Chamber of Commerce	<a href="#">Keith Richard</a>	<ul style="list-style-type: none"> <li>▪ Jennifer Harris (AL) – Alabama Arise</li> <li>▪ Tonya Ware (MS) - ReadyNation</li> </ul>
Get – FL	Affirming name/brand supports, throw in on campaigns even if it’s just name on a support letter	Florida Policy Institute	<a href="#">Holly Bullard</a>	<ul style="list-style-type: none"> <li>▪ Lori Fresina (NP) – NCIT/Voices</li> </ul>
Get – TX	Help with establishing C4 campaign help	Children at Risk	<a href="#">Mandi Kimball</a>	<ul style="list-style-type: none"> <li>▪ Lori Fresina (NP) – NCIT/Voices</li> </ul>
Get – NP	<p>A squishy ask:</p> <ul style="list-style-type: none"> <li>▪ Intergenerational</li> <li>▪ Personal</li> <li>▪ Compassion satisfaction and fatigue</li> <li>▪ How can NCIT create healing and meaning-making spaces, opportunities, tools and resources?</li> </ul>	MS/FL/AR/TX Table	<a href="#">Lisa Matter</a>	

Other				
Give/Get	Details	Organization	Contact Name	Would like to connect:
	Imagine/dream big, “our dreaming is halted”			
Get – NP	AMCHP has a Maternal and Child Health Innovations database, and we would love for your organizations to submit your programs to the database (it’s free!) so that other states can learn from your successes and potentially replicate. Please reach out if interested! We want more PN-3 submissions!	Association of Maternal & Child Health Programs (AMCHP)	<a href="#">Paige (Bussanich) Falion</a>	<ul style="list-style-type: none"> <li>▪ Dawn Owens (AL) – VOICES for Alabama’s Children</li> <li>▪ Jennifer Harris (AL) – Alabama Arise</li> <li>▪ Jessica Garland (NP) – State Innovation Exchange (SiX)</li> <li>▪ Kameron Dawson (NP) – A Better Balance</li> <li>▪ Paige Ferguson (NP) – Future Caucus</li> <li>▪ Tiwani Oseni (NP) – HealthConnect One</li> </ul>

